



# ITF Polyclonal Polyclona Antibody

<b>Catalog No</b>	YP-Ab-10921
<b>Isotype</b>	IgG
<b>Reactivity</b>	Human;Rat;Mouse;
<b>Applications</b>	IHC; ELISA
<b>Gene Name</b>	TFF3 ITF TFI
<b>Protein Name</b>	ITF Polyclonal
<b>Immunogen</b>	Synthesized peptide derived from human ITF Polyclonal AA range: 1-50
<b>Specificity</b>	This antibody detects endogenous levels of human ITF Polyclonal
<b>Formulation</b>	Liquid in PBS containing 50% glycerol, 0.5% BSA and 0.02% sodium azide.
<b>Source</b>	Polyclonal, Rabbit,IgG
<b>Purification</b>	The antibody was affinity-purified from mouse ascites by affinity-chromatography using specific immunogen.
<b>Dilution</b>	IHC-p 1:50-200, ELISA(peptide)1:5000-20000
<b>Concentration</b>	1 mg/ml
<b>Purity</b>	≥90%
<b>Storage Stability</b>	-20°C/1 year
<b>Synonyms</b>	Trefoil factor 3 (Intestinal trefoil factor;hITF;Polypeptide P1.B;hP1.B)
<b>Observed Band</b>	
<b>Cell Pathway</b>	Secreted, extracellular space, extracellular matrix . Cytoplasm .
<b>Tissue Specificity</b>	Expressed in goblet cells of the intestines and colon (at protein level). Expressed by goblet cells of small and large intestinal epithelia and also by the uterus. Also expressed in the hypothalamus where it is detected in paraventricular, periventricular and supraoptic nuclei (at protein level).
<b>Function</b>	function:Involved in the maintenance and repair of the intestinal mucosa. Promotes the mobility of epithelial cells in healing processes (motogen).,similarity:Contains 1 P-type (trefoil) domain.,subunit:Monomer. Homodimer; disulfide-linked.,tissue specificity:Expressed in goblet cells of the intestines and colon (at protein level). Expressed by goblet cells of small and large intestinal epithelia and also by the uterus.,
<b>Background</b>	Members of the trefoil family are characterized by having at least one copy of the trefoil motif, a 40-amino acid domain that contains three conserved disulfides. They are stable secretory proteins expressed in gastrointestinal mucosa. Their functions are not defined, but they may protect the mucosa from insults, stabilize the mucus layer and affect healing of the epithelium. This gene is expressed in goblet cells of the intestines and colon. This gene and two other related trefoil family member genes are found in a cluster on chromosome 21. [provided by



RefSeq, Jul 2008],

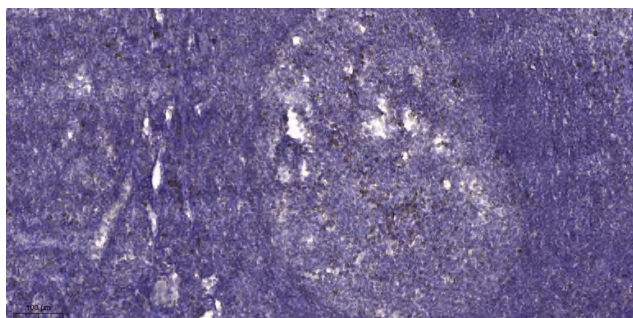
**matters needing attention**

Avoid repeated freezing and thawing!

**Usage suggestions**

This product can be used in immunological reaction related experiments. For more information, please consult technical personnel.

**Products Images**



Immunohistochemical analysis of paraffin-embedded human tonsil. 1, Antibody was diluted at 1:200(4° overnight). 2, Tris-EDTA,pH9.0 was used for antigen retrieval. 3,Secondary antibody was diluted at 1:200(room temperature, 30min).