



Resistin Polyclona Antibody

Catalog No	YP-Ab-10922
Isotype	IgG
Reactivity	Human;Rat;Mouse;
Applications	IHC; ELISA
Gene Name	RETN FIZZ3 HXCP1 RSTN UNQ407/PRO1199
Protein Name	Resistin
Immunogen	Synthesized peptide derived from human Resistin AA range: 1-50
Specificity	This antibody detects endogenous levels of human Resistin
Formulation	Liquid in PBS containing 50% glycerol, 0.5% BSA and 0.02% sodium azide.
Source	Polyclonal, Rabbit,IgG
Purification	The antibody was affinity-purified from mouse ascites by affinity-chromatography using specific immunogen.
Dilution	IHC-p 1:50-200, ELISA(peptide)1:5000-20000
Concentration	1 mg/ml
Purity	≥90%
Storage Stability	-20°C/1 year
Synonyms	Resistin (Adipose tissue-specific secretory factor;ADSF;C/EBP-epsilon-regulated myeloid-specific secreted cysteine-rich protein;Cysteine-rich secreted protein A12-alpha-like 2;Cysteine-rich secreted protein FIZZ3)
Observed Band	
Cell Pathway	Secreted .
Tissue Specificity	Expressed in white adipose tissue (at protein level) (PubMed:11201732). Widely expressed, with particularly strong expression in lung, bone marrow, breast and peripheral blood (PubMed:15248836). Expressed strongly in bone marrow and at lower levels in lung, but not detected in other tissues (PubMed:15064728). Isoform 2 is detected in adipose tissue, bone marrow, brain, lung, peripheral blood, placenta and thymus (PubMed:15248836).
Function	function:Hormone that seems to suppress insulin ability to stimulate glucose uptake into adipose cells. Potentially links obesity to diabetes.,similarity:Belongs to the resistin/FIZZ family.,subunit:Homodimer; disulfide-linked.,tissue specificity:Expressed only in fatty tissues.,
Background	This gene belongs to the family defined by the mouse resistin-like genes. The characteristic feature of this family is the C-terminal stretch of 10 cys residues with identical spacing. The mouse homolog of this protein is secreted by adipocytes, and may be the hormone potentially linking obesity to type II diabetes. Alternatively spliced transcript variants encoding the same protein have been



found for this gene. [provided by RefSeq, Jul 2010],

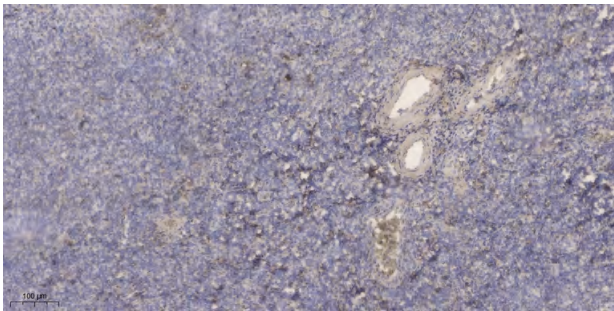
matters needing attention

Avoid repeated freezing and thawing!

Usage suggestions

This product can be used in immunological reaction related experiments. For more information, please consult technical personnel.

Products Images



Immunohistochemical analysis of paraffin-embedded human tonsil. 1, Antibody was diluted at 1:200(4° overnight). 2, Tris-EDTA,pH9.0 was used for antigen retrieval. 3,Secondary antibody was diluted at 1:200(room temperature, 30min).