



BRD1 rabbit pAb

Catalog No	YP-Ab-10945
Isotype	IgG
Reactivity	Human;Rat;Mouse;
Applications	WB
Gene Name	BRD1 BRL BRPF2
Protein Name	BRD1
Immunogen	Synthesized peptide derived from human BRD1 AA range: 399-449
Specificity	This antibody detects endogenous levels of BRD1 at Human
Formulation	Liquid in PBS containing 50% glycerol, 0.5% BSA and 0.02% sodium azide.
Source	Polyclonal, Rabbit,IgG
Purification	The antibody was affinity-purified from rabbit serum by affinity-chromatography using specific immunogen.
Dilution	WB 1: 500-2000
Concentration	1 mg/ml
Purity	≥90%
Storage Stability	-20°C/1 year
Synonyms	
Observed Band	
Cell Pathway	Nucleus . Chromosome . Localizes to transcription start sites. .
Tissue Specificity	Highly expressed in testis.
Function	function:Component of the MOZ/MORF complex which has a histone H3 acetyltransferase activity.,similarity:Contains 1 bromo domain.,similarity:Contains 1 PHD-type zinc finger.,similarity:Contains 1 PWWP domain.,subunit:Component of the MOZ/MORF composed at least of ING5, MYST3/MOZ, MYST4/MORF and one of BRPF1, BRD1/BRPF2 and BRPF3.,tissue specificity:Highly expressed in testis.,
Background	This gene encodes a bromodomain-containing protein that localizes to the nucleus and can interact with DNA and histone tails. The encoded protein is a component of the MOZ/MORF acetyltransferase complex and can stimulate acetylation of histones H3 and H4, thereby potentially playing a role in gene activation. Variation in this gene is associated with schizophrenia and bipolar disorder in some study populations. Alternative splicing results in multiple transcript variants. [provided by RefSeq, Feb 2015],



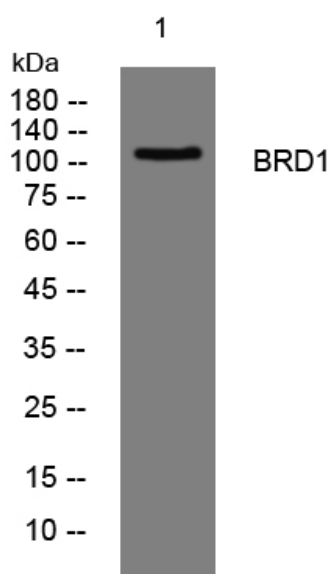
matters needing attention

Avoid repeated freezing and thawing!

Usage suggestions

This product can be used in immunological reaction related experiments. For more information, please consult technical personnel.

Products Images



Western blot analysis of lysates from CACO2 cells, primary antibody was diluted at 1:1000, 4° over night