

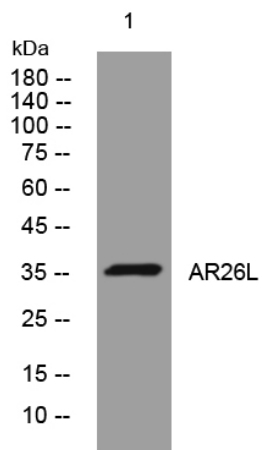


AR26L rabbit pAb

Catalog No	YP-Ab-10953
Isotype	IgG
Reactivity	Human;Rat;Mouse;
Applications	WB
Gene Name	ANKRD26P1
Protein Name	AR26L
Immunogen	Synthesized peptide derived from human AR26L AA range: 268-318
Specificity	This antibody detects endogenous levels of AR26L at Human
Formulation	Liquid in PBS containing 50% glycerol, 0.5% BSA and 0.02% sodium azide.
Source	Polyclonal, Rabbit,IgG
Purification	The antibody was affinity-purified from rabbit serum by affinity-chromatography using specific immunogen.
Dilution	WB 1: 500-2000
Concentration	1 mg/ml
Purity	≥90%
Storage Stability	-20°C/1 year
Synonyms	
Observed Band	
Cell Pathway	
Tissue Specificity	
Function	similarity:Contains 5 ANK repeats.,
Background	
matters needing attention	Avoid repeated freezing and thawing!
Usage suggestions	This product can be used in immunological reaction related experiments. For more information, please consult technical personnel.



Products Images



Western blot analysis of lysates from SH-SY5Y cells,
primary antibody was diluted at 1:1000, 4° over night