



VAMP8 rabbit pAb

Catalog No	YP-Ab-10954
Isotype	IgG
Reactivity	Human; Mouse;Rat
Applications	IHC;IF
Gene Name	VAMP8
Protein Name	VAMP-8
Immunogen	Synthesized peptide derived from human VAMP8 AA range: 46-96
Specificity	This antibody detects endogenous levels of VAMP8 at Human/Mouse/Rat
Formulation	Liquid in PBS containing 50% glycerol, 0.5% BSA and 0.02% sodium azide.
Source	Polyclonal, Rabbit,IgG
Purification	The antibody was affinity-purified from rabbit serum by affinity-chromatography using specific immunogen.
Dilution	IHC-p 1: 50-200. IF 1:50-200
Concentration	1 mg/ml
Purity	≥90%
Storage Stability	-20°C/1 year
Synonyms	
Observed Band	
Cell Pathway	Lysosome membrane ; Single-pass type IV membrane protein . Early endosome membrane ; Single-pass type IV membrane protein . Late endosome membrane ; Single-pass type IV membrane protein . Cell membrane ; Single-pass type IV membrane protein . Zymogen granule membrane ; Single-pass type IV membrane protein . Perinuclear vesicular structures of the early and late endosomes, coated pits, and trans-Golgi (By similarity). Sub-tight junctional domain in retinal pigment epithelium cells. Midbody region during cytokinesis. Luminal oriented, apical membranes of nephric tubular cell (By similarity). Cycles through the apical but not through the basolateral plasma membrane (By similarity). Apical region of acinar cells; in zymogen granule membranes (By similarity). .
Tissue Specificity	Platelets.
Function	function:Involved in the targeting and/or fusion of transport vesicles to their target membrane. Involved for dense-granule secretion in platelets. Plays a role in regulated enzyme secretion in pancreatic acinar cells. Involved in the abscission of the midbody during cell division, which leads to completely separate daughter cells. Involved in the homotypic fusion of early and late endosomes.,similarity:Belongs to the synaptobrevin family.,similarity:Contains 1 v-SNARE coiled-coil homology domain.,subunit:Found in a number of SNARE complexes with NAPA, SNAP23, SNAP25, STX1A, STX4, STX7, STX8 and



VT11B (By similarity). Interacts with STX8.,tissue specificity:Platelets.,

Background

This gene encodes an integral membrane protein that belongs to the synaptobrevin/vesicle-associated membrane protein subfamily of soluble N-ethylmaleimide-sensitive factor attachment protein receptors (SNAREs). The encoded protein is involved in the fusion of synaptic vesicles with the presynaptic membrane.[provided by RefSeq, Jun 2010],

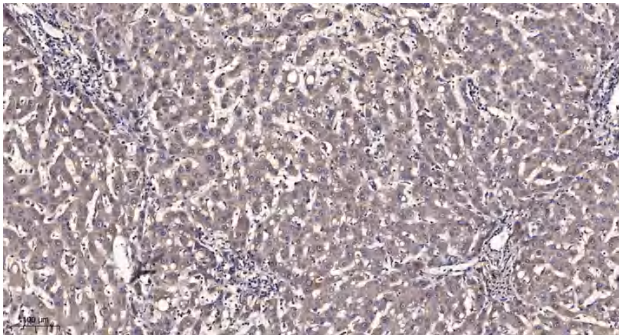
matters needing attention

Avoid repeated freezing and thawing!

Usage suggestions

This product can be used in immunological reaction related experiments. For more information, please consult technical personnel.

Products Images



Immunohistochemical analysis of paraffin-embedded human liver cancer. 1, Antibody was diluted at 1:200(4° overnight). 2, Tris-EDTA,pH9.0 was used for antigen retrieval. 3,Secondary antibody was diluted at 1:200(room temperature, 45min).