



## DGLB rabbit pAb

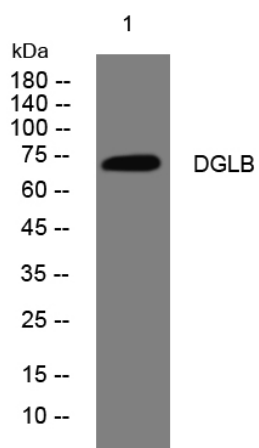
<b>Catalog No</b>	YP-Ab-10956
<b>Isotype</b>	IgG
<b>Reactivity</b>	Human; Mouse;Rat
<b>Applications</b>	WB
<b>Gene Name</b>	DAGLB
<b>Protein Name</b>	DGLB
<b>Immunogen</b>	Synthesized peptide derived from human DGLB AA range: 616-666
<b>Specificity</b>	This antibody detects endogenous levels of DGLB at Human/Mouse/Rat
<b>Formulation</b>	Liquid in PBS containing 50% glycerol, 0.5% BSA and 0.02% sodium azide.
<b>Source</b>	Polyclonal, Rabbit,IgG
<b>Purification</b>	The antibody was affinity-purified from rabbit serum by affinity-chromatography using specific immunogen.
<b>Dilution</b>	WB 1: 500-2000
<b>Concentration</b>	1 mg/ml
<b>Purity</b>	≥90%
<b>Storage Stability</b>	-20°C/1 year
<b>Synonyms</b>	
<b>Observed Band</b>	
<b>Cell Pathway</b>	Cell membrane ; Multi-pass membrane protein .
<b>Tissue Specificity</b>	
<b>Function</b>	cofactor:Calcium.,enzyme regulation:Inhibited by p-hydroxy-mercuri-benzoate and HgCl(2), but not to PMSF. Also inhibited by RHC80267, a drug that blocks 2-AG formation.,function:Catalyzes the hydrolysis of diacylglycerol (DAG) to 2-arachidonoyl-glycerol (2-AG), the most abundant endocannabinoid in tissues. Required for axonal growth during development and for retrograde synaptic signaling at mature synapses.,similarity:Belongs to the AB hydrolase superfamily. Lipase family.,
<b>Background</b>	
<b>matters needing attention</b>	Avoid repeated freezing and thawing!



### Usage suggestions

This product can be used in immunological reaction related experiments. For more information, please consult technical personnel.

## Products Images



Western blot analysis of lysates from HeLa cells,  
primary antibody was diluted at 1:1000, 4° over night