



VCX1 rabbit pAb

Catalog No	YP-Ab-11008
Isotype	IgG
Reactivity	Human;Rat;Mouse;
Applications	WB
Gene Name	VCX VCX1 VCX10R VCXB1
Protein Name	VCX1
Immunogen	Synthesized peptide derived from human VCX1 AA range: 95-145
Specificity	This antibody detects endogenous levels of VCX1 at Human
Formulation	Liquid in PBS containing 50% glycerol, 0.5% BSA and 0.02% sodium azide.
Source	Polyclonal, Rabbit,IgG
Purification	The antibody was affinity-purified from rabbit serum by affinity-chromatography using specific immunogen.
Dilution	WB 1: 500-2000
Concentration	1 mg/ml
Purity	≥90%
Storage Stability	-20°C/1 year
Synonyms	
Observed Band	
Cell Pathway	nucleus,nucleolus,
Tissue Specificity	Expressed exclusively in testis.
Function	function:May mediate a process in spermatogenesis or may play a role in sex ratio distortion.,similarity:Belongs to the VCX/VCY family.,tissue specificity:Expressed exclusively in testis.,
Background	This gene belongs to the VCX/Y gene family, which has multiple members on both X and Y chromosomes, and all are expressed exclusively in male germ cells. The X-linked members are clustered on chromosome Xp22 and Y-linked members are two identical copies of the gene within a palindromic region on Yq11. The family members share a high degree of sequence identity, with the exception that a 30-bp unit is tandemly repeated in X-linked members but occurs only once in Y-linked members. The VCX gene cluster is polymorphic in terms of copy number; different individuals may have a different number of VCX genes. VCX/Y genes encode small and highly charged proteins of unknown function. The presence of a putative bipartite nuclear localization signal suggests that VCX/Y members are nuclear proteins. This gene contains 10 repeats of the 30-bp unit. [provided by RefSeq, Jul 2008],



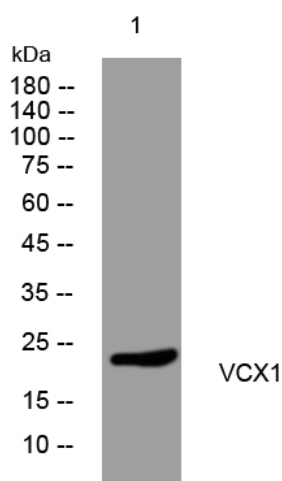
matters needing attention

Avoid repeated freezing and thawing!

Usage suggestions

This product can be used in immunological reaction related experiments. For more information, please consult technical personnel.

Products Images



Western blot analysis of lysates from HuvEc cells, primary antibody was diluted at 1:1000, 4° over night