



LCOR rabbit pAb

Catalog No	YP-Ab-11015
Isotype	IgG
Reactivity	Human; Mouse
Applications	WB;IHC
Gene Name	LCOR KIAA1795 MLR2
Protein Name	LCOR
Immunogen	Synthesized peptide derived from human LCOR AA range: 244-294
Specificity	This antibody detects endogenous levels of LCOR at Human/Mouse
Formulation	Liquid in PBS containing 50% glycerol, 0.5% BSA and 0.02% sodium azide.
Source	Polyclonal, Rabbit,IgG
Purification	The antibody was affinity-purified from rabbit serum by affinity-chromatography using specific immunogen.
Dilution	WB 1:500-2000;IHC-p 1:50-300
Concentration	1 mg/ml
Purity	≥90%
Storage Stability	-20°C/1 year
Synonyms	
Observed Band	
Cell Pathway	Nucleus .
Tissue Specificity	Ubiquitous.
Function	function:May act as transcription activator that binds DNA elements with the sequence 5'-CCCTATCGATCGATCTCTACCT-3' (By similarity). Repressor of ligand-dependent transcription activation by target nuclear receptors. Repressor of ligand-dependent transcription activation by ESR1, ESR2, NR3C1, PGR, RARA, RARB, RARG, RXRA and VDR.,similarity:Contains 1 HTH psq-type DNA-binding domain.,subunit:Interacts with ESR1 and ESR2 in the presence of estradiol. Interacts with CTBP1, HDAC3 and HDAC6. Component of a large corepressor complex that contains about 20 proteins, including CTBP1, CTBP2, HDAC1 and HDAC2.,tissue specificity:Ubiquitous.,
Background	LCOR is a transcriptional corepressor widely expressed in fetal and adult tissues that is recruited to agonist-bound nuclear receptors through a single LxxLL motif, also referred to as a nuclear receptor (NR) box (Fernandes et al., 2003 [PubMed 12535528]).[supplied by OMIM, Mar 2008],



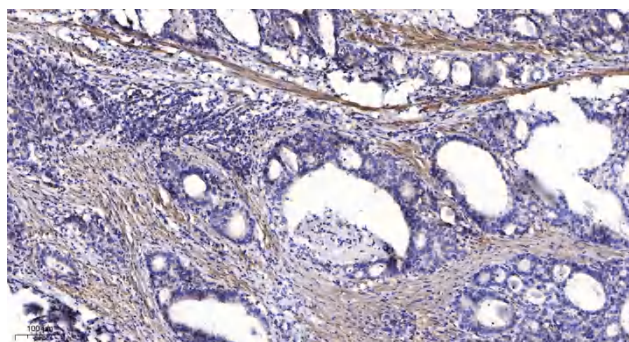
matters needing attention

Avoid repeated freezing and thawing!

Usage suggestions

This product can be used in immunological reaction related experiments. For more information, please consult technical personnel.

Products Images



ary antibody was diluted at 1:1000, 4° over night

Immunohistochemical analysis of paraffin-embedded human Gastric adenocarcinoma. 1, Antibody was diluted at 1:200(4° overnight). 2, Tris-EDTA,pH9.0 was used for antigen retrieval. 3,Secondary antibody was diluted at 1:200(room temperature, 45min).