

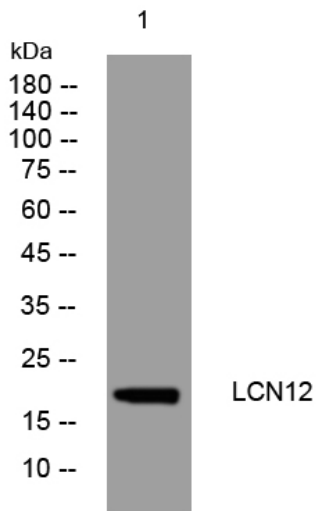


LCN12 rabbit pAb

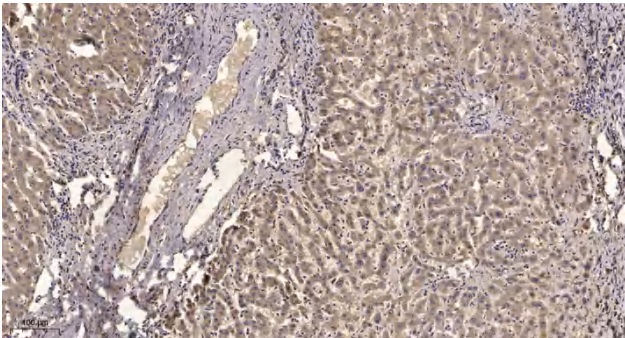
Catalog No	YP-Ab-11019
Isotype	IgG
Reactivity	Human; Mouse;Rat
Applications	WB;ELISA;IHC
Gene Name	LCN12
Protein Name	LCN12
Immunogen	Synthesized peptide derived from human LCN12 AA range: 56-106
Specificity	This antibody detects endogenous levels of LCN12 at Human/Mouse/Rat
Formulation	Liquid in PBS containing 50% glycerol, 0.5% BSA and 0.02% sodium azide.
Source	Polyclonal, Rabbit,IgG
Purification	The antibody was affinity-purified from rabbit serum by affinity-chromatography using specific immunogen.
Dilution	WB 1:500-2000;IHC-p 1:50-300; ELISA 2000-20000
Concentration	1 mg/ml
Purity	≥90%
Storage Stability	-20°C/1 year
Synonyms	
Observed Band	
Cell Pathway	Secreted .
Tissue Specificity	
Function	function:May play a role in male fertility. May act as a retinoid carrier protein within the epididymis.,similarity:Belongs to the calycin superfamily. Lipocalin family.,
Background	Members of the lipocalin family, such as LCN12, have a common structure consisting of an 8-stranded antiparallel beta-barrel that forms a cup-shaped ligand-binding pocket or calyx. Lipocalins generally bind small hydrophobic ligands and transport them to specific cells (Suzuki et al., 2004 [PubMed 15363845]).[supplied by OMIM, Aug 2009],
matters needing attention	Avoid repeated freezing and thawing!
Usage suggestions	This product can be used in immunological reaction related experiments. For more information, please consult technical personnel.



Products Images



Western blot analysis of lysates from MCF-7 cells, primary antibody was diluted at 1:1000, 4° over night



Immunohistochemical analysis of paraffin-embedded human liver cancer. 1, Antibody was diluted at 1:200(4° overnight). 2, Tris-EDTA,pH9.0 was used for antigen retrieval. 3,Secondary antibody was diluted at 1:200(room temperature, 45min).