



S4A5 rabbit pAb

Catalog No	YP-Ab-11032
Isotype	IgG
Reactivity	Human;Rat
Applications	WB
Gene Name	SLC4A5 NBC4
Protein Name	S4A5
Immunogen	Synthesized peptide derived from human S4A5 AA range: 26-76
Specificity	This antibody detects endogenous levels of S4A5 at Human/Rat
Formulation	Liquid in PBS containing 50% glycerol, 0.5% BSA and 0.02% sodium azide.
Source	Polyclonal, Rabbit,IgG
Purification	The antibody was affinity-purified from rabbit serum by affinity-chromatography using specific immunogen.
Dilution	WB 1: 500-2000
Concentration	1 mg/ml
Purity	≥90%
Storage Stability	-20°C/1 year
Synonyms	
Observed Band	
Cell Pathway	Apical cell membrane ; Multi-pass membrane protein . Expressed in the apical plasma membrane domain of a subset of collecting ducts in the renal medulla. .
Tissue Specificity	Highest expression observed in liver, spleen and testis; moderate expression in the choroid plexus, hippocampus, cerebrum and cerebellum of brain, and in kidney cortex and kidney medulla. Also observed in heart, pancreas, muscle, lung, placenta, stomach and small intestine. Weakest expression seen in peripheral blood lymphocytes, colon, duodenum, jejunum, ileum and skeletal muscle.
Function	function:Mediates sodium- and bicarbonate-dependent electrogenic sodium bicarbonate cotransport, with a Na(+):HCO3(-) stoichiometry of 2:1. May have a housekeeping function in regulating the pH of tissues in which it is expressed. May play a role in mediating Na(+):HCO3(-) cotransport in hepatocytes and intrahepatic cholangiocytes. Also may be important in protecting the renal paranchyma from alterations in urine pH.,miscellaneous:Activity is inhibited by 4,4'-Di-isothiocyanatostilbene-2,2'-disulfonic acid (DIDS - an inhibitor of several anionic channels and transporters).,similarity:Belongs to the anion exchanger (TC 2.A.31) family.,subcellular location:Expressed in the apical plasma membrane domain of a subset of collecting ducts in the renal medulla.,tissue specificity:Highest expression observed in liver, spleen and testis; moderate



expression in the choroid plexus, hippocampus, cere

Background

This gene encodes a member of the sodium bicarbonate cotransporter (NBC) family, part of the bicarbonate transporter superfamily. Sodium bicarbonate cotransporters are involved in intracellular pH regulation and electroneutral or electrogenic sodium bicarbonate transport. This protein is thought to be an integral membrane protein. Multiple transcript variants encoding different isoforms have been found for this gene, but the biological validity of some variants has not been determined. [provided by RefSeq, Jul 2008],

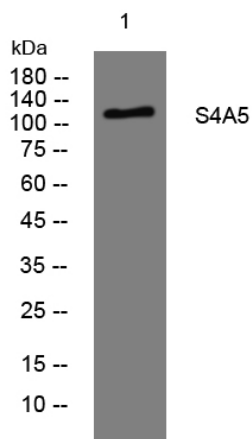
matters needing attention

Avoid repeated freezing and thawing!

Usage suggestions

This product can be used in immunological reaction related experiments. For more information, please consult technical personnel.

Products Images



Western blot analysis of lysates from SH-SY5Y cells, primary antibody was diluted at 1:1000, 4° over night