



ASTL rabbit pAb

Catalog No	YP-Ab-11038
Isotype	IgG
Reactivity	Human; Mouse
Applications	WB
Gene Name	ASTL
Protein Name	ASTL
Immunogen	Synthesized peptide derived from human ASTL AA range: 115-165
Specificity	This antibody detects endogenous levels of ASTL at Human/Mouse
Formulation	Liquid in PBS containing 50% glycerol, 0.5% BSA and 0.02% sodium azide.
Source	Polyclonal, Rabbit,IgG
Purification	The antibody was affinity-purified from rabbit serum by affinity-chromatography using specific immunogen.
Dilution	WB 1: 500-2000
Concentration	1 mg/ml
Purity	≥90%
Storage Stability	-20°C/1 year
Synonyms	
Observed Band	
Cell Pathway	Cytoplasm . Cell membrane . Cytoplasmic vesicle, secretory vesicle, Cortical granule . Probably exocytosed from cortical granules during post-fertilization. Detected throughout the ooplasm of germinal vesicle stage oocytes in early bilaminar secondary follicles at postnatal (PN) day 3. Detected in the microvillar domain of the oolemma in arrested ovulated secondary oocytes and in the first polar body prior to fertilization. Upon fertilization, detected in the perivitelline space (PVS) and occasionally on the oolemma in 2-cell through morulae stages. Colocalizes with SPACA3 at the microvillar domain of the oolemma and in the perivitelline space (PVS). .
Tissue Specificity	Expressed in promyelocytic leukemia HL-60 cells, Burkitt's lymphoma Raji cells, and also in some ovarian carcinomas. Not detected in normal tissues.
Function	enzyme regulation:Inhibited by wide spectrum metalloproteinase inhibitor batimastat (BB-94). Also inhibited by EDTA.,similarity:Belongs to the peptidase M12A family.,tissue specificity:Expressed in promyelocytic leukemia HL-60 cells, Burkitt's lymphoma Raji cells, and also in some ovarian carcinomas. Not detected in normal tissues.,
Background	



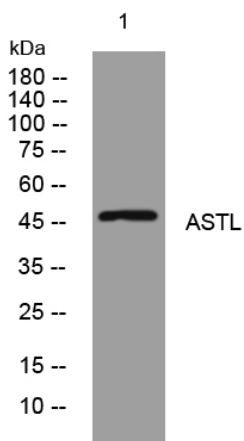
matters needing attention

Avoid repeated freezing and thawing!

Usage suggestions

This product can be used in immunological reaction related experiments. For more information, please consult technical personnel.

Products Images



Western blot analysis of lysates from HEK293 cells, primary antibody was diluted at 1:1000, 4° over night