



FXYD3 rabbit pAb

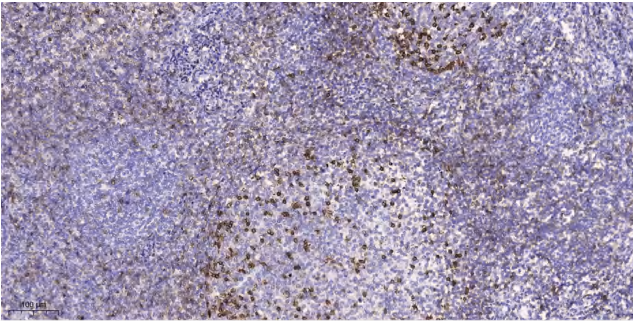
Catalog No	YP-Ab-11040
Isotype	IgG
Reactivity	Human; Mouse;Rat
Applications	IHC;IF
Gene Name	FXYD3 MAT8 PLML
Protein Name	FXYD3
Immunogen	Synthesized peptide derived from human FXYD3 AA range: 15-65
Specificity	This antibody detects endogenous levels of FXYD3 at Human/Mouse/Rat
Formulation	Liquid in PBS containing 50% glycerol, 0.5% BSA and 0.02% sodium azide.
Source	Polyclonal, Rabbit,IgG
Purification	The antibody was affinity-purified from rabbit serum by affinity-chromatography using specific immunogen.
Dilution	IHC-p 1: 50-200. IF 1:50-200
Concentration	1 mg/ml
Purity	≥90%
Storage Stability	-20°C/1 year
Synonyms	
Observed Band	
Cell Pathway	Cell membrane ; Single-pass type I membrane protein .
Tissue Specificity	Isoform 1: Expressed mainly in differentiated cells (at protein level). Isoform 2: Expressed mainly in undifferentiated cells (at protein level).
Function	function:Induces a hyperpolarization-activated chloride current when expressed in Xenopus oocytes. May be a modulator capable of activating endogenous oocyte channels.,miscellaneous:Marker of a cell type preferentially transformed by neu or ras oncoprotein.,similarity:Belongs to the FXYD family.,tissue specificity:Expressed in a subset of human breast tumors.,
Background	This gene belongs to a small family of FXYD-domain containing regulators of Na ⁺ /K ⁺ ATPases which share a 35-amino acid signature sequence domain, beginning with the sequence PFXYD, and containing 7 invariant and 6 highly conserved amino acids. This gene encodes a cell membrane protein that may regulate the function of ion-pumps and ion-channels. This gene may also play a role in tumor progression. Alternative splicing results in multiple transcript variants encoding distinct isoforms.[provided by RefSeq, Oct 2008],
matters needing attention	Avoid repeated freezing and thawing!



Usage suggestions

This product can be used in immunological reaction related experiments. For more information, please consult technical personnel.

Products Images



Immunohistochemical analysis of paraffin-embedded human tonsil. 1, Antibody was diluted at 1:200(4° overnight). 2, Tris-EDTA,pH9.0 was used for antigen retrieval. 3,Secondary antibody was diluted at 1:200(room temperature, 45min).