

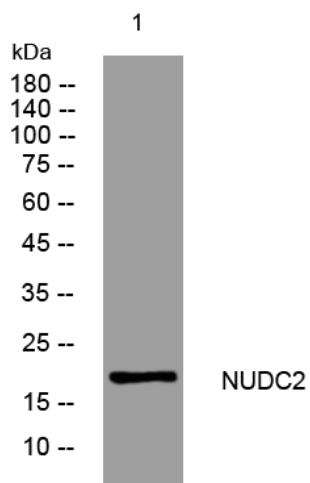


# NUDC2 rabbit pAb

|                                  |  |
|----------------------------------|--|
| <b>Catalog No</b>                | YP-Ab-11053  |
| <b>Isotype</b>                   | IgG  |
| <b>Reactivity</b>                | Human; Mouse;Rat   |
| <b>Applications</b>              | WB   |
| <b>Gene Name</b>                 | NUDCD2   |
| <b>Protein Name</b>              | NUDC2  |
| <b>Immunogen</b>                 | Synthesized peptide derived from human NUDC2 AA range: 90-140  |
| <b>Specificity</b>               | This antibody detects endogenous levels of NUDC2 at Human/Mouse/Rat  |
| <b>Formulation</b>               | Liquid in PBS containing 50% glycerol, 0.5% BSA and 0.02% sodium azide.  |
| <b>Source</b>                    | Polyclonal, Rabbit,IgG   |
| <b>Purification</b>              | The antibody was affinity-purified from rabbit serum by affinity-chromatography using specific immunogen.  |
| <b>Dilution</b>                  | WB 1: 500-2000   |
| <b>Concentration</b>             | 1 mg/ml  |
| <b>Purity</b>                    | ≥90%   |
| <b>Storage Stability</b>         | -20°C/1 year   |
| <b>Synonyms</b>                  |  |
| <b>Observed Band</b>             |  |
| <b>Cell Pathway</b>              | Chromosome, centromere, kinetochore . Cytoplasm, cytoskeleton, microtubule organizing center, centrosome . Cytoplasm, cytoskeleton, spindle pole . Associates with centrosomes in interphase and to spindle poles and kinetochores during mitosis. |
| <b>Tissue Specificity</b>        |  |
| <b>Function</b>                  | similarity:Contains 1 CS domain.,  |
| <b>Background</b>                |  |
| <b>matters needing attention</b> | Avoid repeated freezing and thawing!   |
| <b>Usage suggestions</b>         | This product can be used in immunological reaction related experiments. For more information, please consult technical personnel.  |



## Products Images



Western blot analysis of lysates from AD293 cells,  
primary antibody was diluted at 1:1000, 4° over night