

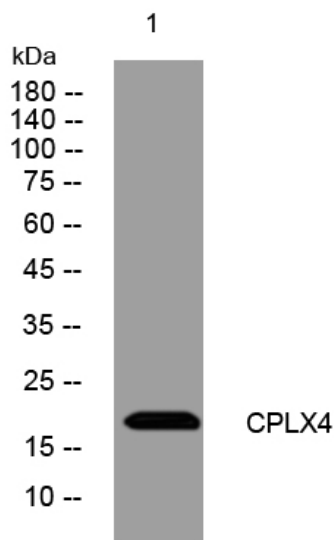


CPLX4 rabbit pAb

| | |
|----------------------------------|--|
| Catalog No | YP-Ab-11062 |
| Isotype | IgG |
| Reactivity | Human; Mouse |
| Applications | WB |
| Gene Name | CPLX4 |
| Protein Name | CPLX4 |
| Immunogen | Synthesized peptide derived from human CPLX4 AA range: 47-97 |
| Specificity | This antibody detects endogenous levels of CPLX4 at Human/Mouse |
| Formulation | Liquid in PBS containing 50% glycerol, 0.5% BSA and 0.02% sodium azide. |
| Source | Polyclonal, Rabbit,IgG |
| Purification | The antibody was affinity-purified from rabbit serum by affinity-chromatography using specific immunogen. |
| Dilution | WB 1: 500-2000 |
| Concentration | 1 mg/ml |
| Purity | ≥90% |
| Storage Stability | -20°C/1 year |
| Synonyms | |
| Observed Band | |
| Cell Pathway | Cell junction, synapse . Cell membrane; Lipid-anchor . Enriched at the synaptic terminal. . |
| Tissue Specificity | |
| Function | function:Positively regulates a late step in synaptic vesicle exocytosis.,PTM:Farnesylation mediates presynaptic targeting and is important for function in neurotransmitter release.,similarity:Belongs to the complexin/synaphin family.,subcellular location:Enriched at the synaptic terminal.,subunit:Weakly binds to the SNARE core complex containing SNAP25, VAMP2 and STX1A., |
| Background | This gene likely encodes a member of the complexin family. The encoded protein may be involved in synaptic vesicle exocytosis. [provided by RefSeq, Jan 2009], |
| matters needing attention | Avoid repeated freezing and thawing! |
| Usage suggestions | This product can be used in immunological reaction related experiments. For more information, please consult technical personnel. |



Products Images



Western blot analysis of lysates from MCF-7 cells,
primary antibody was diluted at 1:1000, 4° over night