



EVX2 rabbit pAb

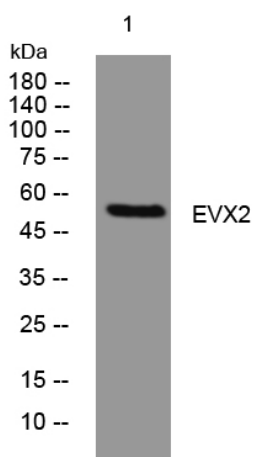
Catalog No	YP-Ab-11063
Isotype	IgG
Reactivity	Human; Mouse
Applications	WB
Gene Name	EVX2
Protein Name	EVX2
Immunogen	Synthesized peptide derived from human EVX2 AA range: 138-188
Specificity	This antibody detects endogenous levels of EVX2 at Human/Mouse
Formulation	Liquid in PBS containing 50% glycerol, 0.5% BSA and 0.02% sodium azide.
Source	Polyclonal, Rabbit,IgG
Purification	The antibody was affinity-purified from rabbit serum by affinity-chromatography using specific immunogen.
Dilution	WB 1: 500-2000
Concentration	1 mg/ml
Purity	≥90%
Storage Stability	-20°C/1 year
Synonyms	
Observed Band	
Cell Pathway	Nucleus.
Tissue Specificity	
Function	developmental stage:Expressed during early embryogenesis and neurogenesis in a biphasic manner.,similarity:Belongs to the even-skipped homeobox family.,similarity:Contains 1 homeobox DNA-binding domain.,
Background	This gene is located at the 5' end of the HOXD gene cluster on chromosome 2. The encoded protein is a homeobox transcription factor that is related to the protein encoded by the Drosophila even-skipped (eve) gene, a member of the pair-rule class of segmentation genes. A 117 kb microdeletion at the 5' end of the HOXD gene cluster, which includes this gene and the HOXD9-HOXD13 genes, causes synpolydactyly, a dominantly inherited disease resulting in limb malformation. [provided by RefSeq, Sep 2009],
matters needing attention	Avoid repeated freezing and thawing!



Usage suggestions

This product can be used in immunological reaction related experiments. For more information, please consult technical personnel.

Products Images



Western blot analysis of lysates from MCF-7 cells, primary antibody was diluted at 1:1000, 4° over night