



FCGRN rabbit pAb

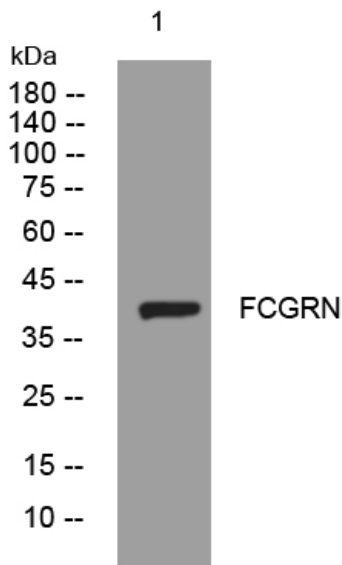
Catalog No	YP-Ab-11075
Isotype	IgG
Reactivity	Human; Mouse;Rat
Applications	WB
Gene Name	FCGRT FCRN
Protein Name	FCGRN
Immunogen	Synthesized peptide derived from human FCGRN AA range: 146-196
Specificity	This antibody detects endogenous levels of FCGRN at Human/Mouse/Rat
Formulation	Liquid in PBS containing 50% glycerol, 0.5% BSA and 0.02% sodium azide.
Source	Polyclonal, Rabbit,IgG
Purification	The antibody was affinity-purified from rabbit serum by affinity-chromatography using specific immunogen.
Dilution	WB 1: 500-2000
Concentration	1 mg/ml
Purity	≥90%
Storage Stability	-20°C/1 year
Synonyms	
Observed Band	
Cell Pathway	Cell membrane ; Single-pass type I membrane protein . Endosome membrane .
Tissue Specificity	Expressed in full-term placenta, heart, lung, liver, muscle, kidney, pancreas, and both fetal and adult small intestine.
Function	function: Binds to the Fc region of monomeric immunoglobulins gamma. Mediates the uptake of IgG from milk. Possible role in transfer of immunoglobulin G from mother to fetus.,similarity: Belongs to the immunoglobulin superfamily.,subunit: FcRn complex consist of two subunits: p51, and p14 which is equivalent to beta-2-microglobulin. It forms an MHC class I-like heterodimer.,
Background	This gene encodes a receptor that binds the Fc region of monomeric immunoglobulin G. The encoded protein transfers immunoglobulin G antibodies from mother to fetus across the placenta. This protein also binds immunoglobulin G to protect the antibody from degradation. Alternative splicing results in multiple transcript variants. [provided by RefSeq, Apr 2009],
matters needing attention	Avoid repeated freezing and thawing!



Usage suggestions

This product can be used in immunological reaction related experiments. For more information, please consult technical personnel.

Products Images



Western blot analysis of lysates from HeLa cells, primary antibody was diluted at 1:1000, 4° over night