

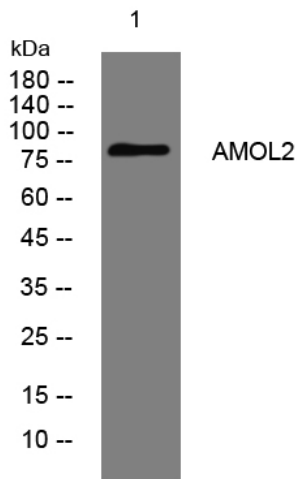


## AMOL2 rabbit pAb

<b>Catalog No</b>	YP-Ab-11085
<b>Isotype</b>	IgG
<b>Reactivity</b>	Human; Mouse;Rat
<b>Applications</b>	WB
<b>Gene Name</b>	AMOTL2 KIAA0989
<b>Protein Name</b>	AMOL2
<b>Immunogen</b>	Synthesized peptide derived from human AMOL2 AA range: 201-251
<b>Specificity</b>	This antibody detects endogenous levels of AMOL2 at Human/Mouse/Rat
<b>Formulation</b>	Liquid in PBS containing 50% glycerol, 0.5% BSA and 0.02% sodium azide.
<b>Source</b>	Polyclonal, Rabbit,IgG
<b>Purification</b>	The antibody was affinity-purified from rabbit serum by affinity-chromatography using specific immunogen.
<b>Dilution</b>	WB 1: 500-2000
<b>Concentration</b>	1 mg/ml
<b>Purity</b>	≥90%
<b>Storage Stability</b>	-20°C/1 year
<b>Synonyms</b>	
<b>Observed Band</b>	
<b>Cell Pathway</b>	Recycling endosome .
<b>Tissue Specificity</b>	
<b>Function</b>	similarity:Belongs to the angiotenin family.,
<b>Background</b>	Angiotenin is a protein that binds angiotenin, a circulating inhibitor of the formation of new blood vessels (angiogenesis). Angiotenin mediates angiotenin inhibition of endothelial cell migration and tube formation in vitro. The protein encoded by this gene is related to angiotenin and is a member of the motin protein family. Alternative splicing results in multiple transcript variants of this gene. [provided by RefSeq, Jul 2013],
<b>matters needing attention</b>	Avoid repeated freezing and thawing!
<b>Usage suggestions</b>	This product can be used in immunological reaction related experiments. For more information, please consult technical personnel.



## Products Images



Western blot analysis of lysates from KB cells, primary antibody was diluted at 1:1000, 4° over night