



AP2S1 rabbit pAb

Catalog No	YP-Ab-11088
Isotype	IgG
Reactivity	Human; Mouse;Rat
Applications	WB
Gene Name	AP2S1 AP17 CLAPS2
Protein Name	AP2S1
Immunogen	Synthesized peptide derived from human AP2S1 AA range: 26-76
Specificity	This antibody detects endogenous levels of AP2S1 at Human/Mouse/Rat
Formulation	Liquid in PBS containing 50% glycerol, 0.5% BSA and 0.02% sodium azide.
Source	Polyclonal, Rabbit,IgG
Purification	The antibody was affinity-purified from rabbit serum by affinity-chromatography using specific immunogen.
Dilution	WB 1: 500-2000
Concentration	1 mg/ml
Purity	≥90%
Storage Stability	-20°C/1 year
Synonyms	
Observed Band	
Cell Pathway	Cell membrane. Membrane, coated pit; Peripheral membrane protein; Cytoplasmic side. AP-2 appears to be excluded from internalizing CCVs and to disengage from sites of endocytosis seconds before internalization of the nascent CCV. .
Tissue Specificity	
Function	function:Component of the adaptor complexes which link clathrin to receptors in coated vesicles. Clathrin-associated protein complexes are believed to interact with the cytoplasmic tails of membrane proteins, leading to their selection and concentration. AP2S1/AP17 is a subunit of the plasma membrane adaptor. The complex binds polyphosphoinositides.,similarity:Belongs to the adaptor complexes small subunit family.,subcellular location:Component of the coat surrounding the cytoplasmic face of coated vesicles in the plasma membrane.,subunit:Adaptor protein complex 2 (AP-2) is a heterotetramer composed of two large adaptins (alpha-type subunit AP2A1 or AP2A2 and beta-type subunit AP2B1), a medium adaptin (mu-type subunit AP2M1) and a small adaptin (sigma-type subunit AP2S1).,
Background	One of two major clathrin-associated adaptor complexes, AP-2, is a heterotetramer which is associated with the plasma membrane. This complex is



composed of two large chains, a medium chain, and a small chain. This gene encodes the small chain of this complex. Alternative splicing results in multiple transcript variants. [provided by RefSeq, Jul 2014],

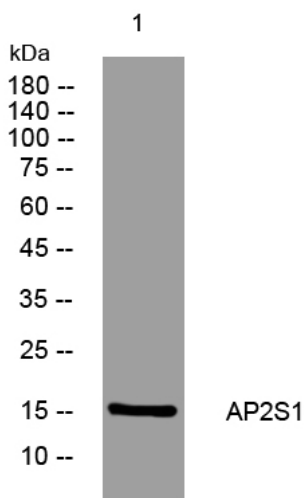
matters needing attention

Avoid repeated freezing and thawing!

Usage suggestions

This product can be used in immunological reaction related experiments. For more information, please consult technical personnel.

Products Images



Western blot analysis of lysates from HpeG2 cells, primary antibody was diluted at 1:1000, 4° over night