

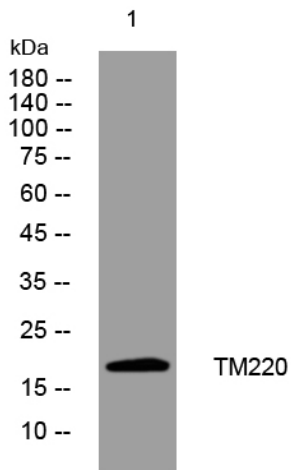


TM220 rabbit pAb

| | |
|----------------------------------|---|
| Catalog No | YP-Ab-11096 |
| Isotype | IgG |
| Reactivity | Human; Mouse |
| Applications | WB |
| Gene Name | TMEM220 |
| Protein Name | TM220 |
| Immunogen | Synthesized peptide derived from human TM220 AA range: 51-101 |
| Specificity | This antibody detects endogenous levels of TM220 at Human/Mouse |
| Formulation | Liquid in PBS containing 50% glycerol, 0.5% BSA and 0.02% sodium azide. |
| Source | Polyclonal, Rabbit,IgG |
| Purification | The antibody was affinity-purified from rabbit serum by affinity-chromatography using specific immunogen. |
| Dilution | WB 1: 500-2000 |
| Concentration | 1 mg/ml |
| Purity | ≥90% |
| Storage Stability | -20°C/1 year |
| Synonyms | |
| Observed Band | |
| Cell Pathway | Membrane ; Multi-pass membrane protein . |
| Tissue Specificity | |
| Function | |
| Background | |
| matters needing attention | Avoid repeated freezing and thawing! |
| Usage suggestions | This product can be used in immunological reaction related experiments. For more information, please consult technical personnel. |



Products Images



Western blot analysis of lysates from KB cells, primary antibody was diluted at 1:1000, 4° over night