

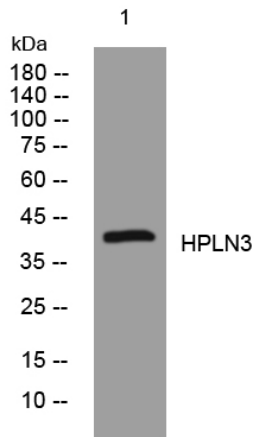


HPLN3 rabbit pAb

Catalog No	YP-Ab-11104
Isotype	IgG
Reactivity	Human; Mouse
Applications	WB
Gene Name	HAPLN3 EXLD1 UNQ238/PRO271
Protein Name	HPLN3
Immunogen	Synthesized peptide derived from human HPLN3 AA range: 87-137
Specificity	This antibody detects endogenous levels of HPLN3 at Human/Mouse
Formulation	Liquid in PBS containing 50% glycerol, 0.5% BSA and 0.02% sodium azide.
Source	Polyclonal, Rabbit,IgG
Purification	The antibody was affinity-purified from rabbit serum by affinity-chromatography using specific immunogen.
Dilution	WB 1: 500-2000
Concentration	1 mg/ml
Purity	≥90%
Storage Stability	-20°C/1 year
Synonyms	
Observed Band	
Cell Pathway	Secreted, extracellular space, extracellular matrix .
Tissue Specificity	Widely expressed with highest levels in spleen and placenta.
Function	function:May function in hyaluronic acid binding.,similarity:Belongs to the HAPLN family.,similarity:Contains 1 Ig-like V-type (immunoglobulin-like) domain.,similarity:Contains 2 Link domains.,tissue specificity:Widely expressed with highest levels in spleen and placenta.,
Background	This gene belongs to the hyaluronan and proteoglycan binding link protein gene family. The protein encoded by this gene may function in hyaluronic acid binding and cell adhesion. [provided by RefSeq, Jul 2008],
matters needing attention	Avoid repeated freezing and thawing!
Usage suggestions	This product can be used in immunological reaction related experiments. For more information, please consult technical personnel.



Products Images



Western blot analysis of lysates from 293T cells,
primary antibody was diluted at 1:1000, 4° over night