



ACADL rabbit pAb

Catalog No	YP-Ab-11133
Isotype	IgG
Reactivity	Human; Mouse;Rat
Applications	WB
Gene Name	ACADL
Protein Name	ACADL
Immunogen	Synthesized peptide derived from human ACADL AA range: 258-308
Specificity	This antibody detects endogenous levels of ACADL at Human/Mouse/Rat
Formulation	Liquid in PBS containing 50% glycerol, 0.5% BSA and 0.02% sodium azide.
Source	Polyclonal, Rabbit,IgG
Purification	The antibody was affinity-purified from rabbit serum by affinity-chromatography using specific immunogen.
Dilution	WB 1: 500-2000
Concentration	1 mg/ml
Purity	≥90%
Storage Stability	-20°C/1 year
Synonyms	
Observed Band	
Cell Pathway	Mitochondrion matrix .
Tissue Specificity	
Function	catalytic activity:Acyl-CoA + acceptor = 2,3-dehydroacyl-CoA + reduced acceptor.,cofactor:FAD.,disease:Impaired ACADL activity results in non-ketotic hypoglycemia, hypotonia, muscle weakness and episodes of cardiorespiratory arrest associated with fasting [MIM:201460].,miscellaneous:A number of straight-chain acyl-CoA dehydrogenases of different substrate specificities are present in mammalian tissues.,pathway:Lipid metabolism; mitochondrial fatty acid beta-oxidation.,similarity:Belongs to the acyl-CoA dehydrogenase family.,subunit:Homotetramer.,
Background	The protein encoded by this gene belongs to the acyl-CoA dehydrogenase family, which is a family of mitochondrial flavoenzymes involved in fatty acid and branched chain amino-acid metabolism. This protein is one of the four enzymes that catalyze the initial step of mitochondrial beta-oxidation of straight-chain fatty acid. Defects in this gene are the cause of long-chain acyl-CoA dehydrogenase (LCAD) deficiency, leading to nonketotic hypoglycemia. [provided by RefSeq, Jul 2008],



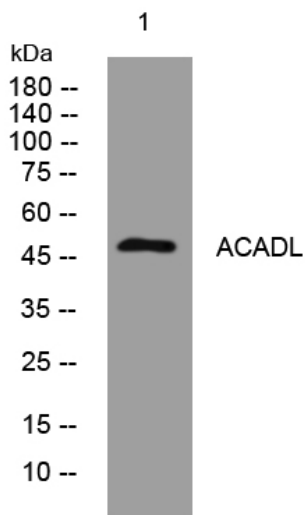
matters needing attention

Avoid repeated freezing and thawing!

Usage suggestions

This product can be used in immunological reaction related experiments. For more information, please consult technical personnel.

Products Images



Western blot analysis of lysates from A549 cells, primary antibody was diluted at 1:1000, 4°over night