

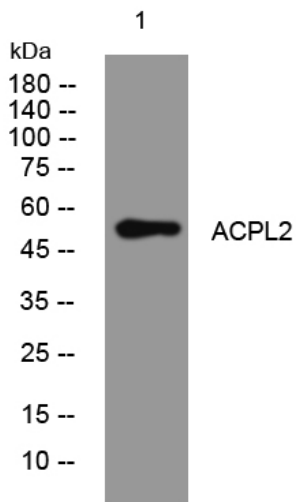


ACPL2 rabbit pAb

| | |
|----------------------------------|--|
| Catalog No | YP-Ab-11144 |
| Isotype | IgG |
| Reactivity | Human; Mouse;Rat |
| Applications | WB |
| Gene Name | ACPL2 UNQ370/PRO706 |
| Protein Name | ACPL2 |
| Immunogen | Synthesized peptide derived from human ACPL2 AA range: 201-251 |
| Specificity | This antibody detects endogenous levels of ACPL2 at Human/Mouse/Rat |
| Formulation | Liquid in PBS containing 50% glycerol, 0.5% BSA and 0.02% sodium azide. |
| Source | Polyclonal, Rabbit,IgG |
| Purification | The antibody was affinity-purified from rabbit serum by affinity-chromatography using specific immunogen. |
| Dilution | WB 1: 500-2000 |
| Concentration | 1 mg/ml |
| Purity | ≥90% |
| Storage Stability | -20°C/1 year |
| Synonyms | |
| Observed Band | |
| Cell Pathway | Golgi apparatus membrane ; Single-pass type II membrane protein . Colocalizes to Golgi apparatus in a B3GAT3-dependent manner. . |
| Tissue Specificity | Widely expressed. Strongly expressed in spleen, fetal liver, moderately in placenta, pancreas, kidney, thymus and colon. |
| Function | catalytic activity:A phosphate monoester + H(2)O = an alcohol + phosphate.,similarity:Belongs to the histidine acid phosphatase family., |
| Background | |
| matters needing attention | Avoid repeated freezing and thawing! |
| Usage suggestions | This product can be used in immunological reaction related experiments. For more information, please consult technical personnel. |



Products Images



Western blot analysis of lysates from HpeG2 cells,
primary antibody was diluted at 1:1000, 4° over night