

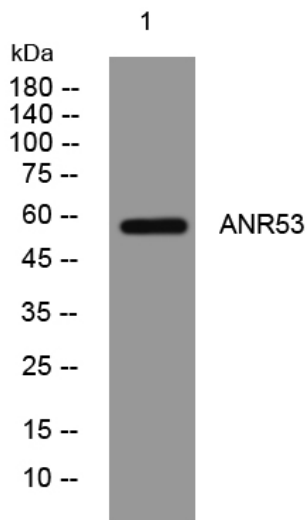


ANR53 rabbit pAb

Catalog No	YP-Ab-11170
Isotype	IgG
Reactivity	Human; Mouse
Applications	WB
Gene Name	ANKRD53
Protein Name	ANR53
Immunogen	Synthesized peptide derived from human ANR53 AA range: 406-456
Specificity	This antibody detects endogenous levels of ANR53 at Human/Mouse
Formulation	Liquid in PBS containing 50% glycerol, 0.5% BSA and 0.02% sodium azide.
Source	Polyclonal, Rabbit,IgG
Purification	The antibody was affinity-purified from rabbit serum by affinity-chromatography using specific immunogen.
Dilution	WB 1: 500-2000
Concentration	1 mg/ml
Purity	≥90%
Storage Stability	-20°C/1 year
Synonyms	
Observed Band	
Cell Pathway	Cytoplasm, cytoskeleton, spindle . Cytoplasm, cytoskeleton, spindle pole . Localizes at the spindle around the centrosome at prophase and prometaphase and at the spindle poles at metaphase and anaphase (PubMed:26820536). .
Tissue Specificity	
Function	similarity:Contains 3 ANK repeats.,
Background	
matters needing attention	Avoid repeated freezing and thawing!
Usage suggestions	This product can be used in immunological reaction related experiments. For more information, please consult technical personnel.



Products Images



Western blot analysis of lysates from A549 cells,
primary antibody was diluted at 1:1000, 4° over night