



GLDN rabbit pAb

Catalog No	YP-Ab-11180
Isotype	IgG
Reactivity	Human; Mouse;Rat
Applications	WB
Gene Name	GLDN COLM UNQ9339/PRO34011
Protein Name	GLDN
Immunogen	Synthesized peptide derived from human GLDN AA range: 461-511
Specificity	This antibody detects endogenous levels of GLDN at Human/Mouse/Rat
Formulation	Liquid in PBS containing 50% glycerol, 0.5% BSA and 0.02% sodium azide.
Source	Polyclonal, Rabbit,IgG
Purification	The antibody was affinity-purified from rabbit serum by affinity-chromatography using specific immunogen.
Dilution	WB 1: 500-2000
Concentration	1 mg/ml
Purity	≥90%
Storage Stability	-20°C/1 year
Synonyms	
Observed Band	
Cell Pathway	Cell membrane ; Single-pass type II membrane protein . Cell projection, axon . Detected at the nodes of Ranvier. Detected at immature heminodes. . ; [Gliomedin shedded ectodomain]: Secreted . Secreted, extracellular space, extracellular matrix . Proteolytic processing gives rise to a soluble extracellular domain that is secreted. The gliomedin shedded ectodomain localizes to the nodes of Ranvier. .
Tissue Specificity	Specifically expressed in spinal cord, brain, placenta and sciatic nerve. More abundant in peripheral than central nervous system.
Function	domain:The olfactomedin-like domain mediates NFASC/neurofascin and NRCAM binding.,function:Plays a role in the formation of the nodes of Ranvier along myelinated axons. Probable NRCAM and NFASC/neurofascin ligand which may provide a glial positional clue required for the proper molecular assembly of the nodes of Ranvier.,similarity:Contains 1 olfactomedin-like domain.,similarity:Contains 2 collagen-like domains.,subcellular location:Localizes to the nodes of Ranvier.,subunit:Interacts with NFASC/neurofascin and NRCAM.,tissue specificity:Specifically expressed in spinal cord, brain, placenta and sciatic nerve. More abundant in peripheral than central nervous system.,
Background	



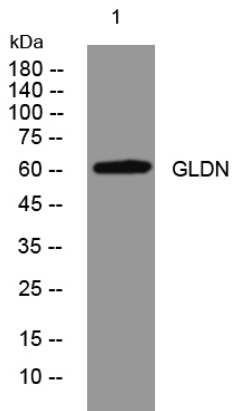
matters needing attention

Avoid repeated freezing and thawing!

Usage suggestions

This product can be used in immunological reaction related experiments. For more information, please consult technical personnel.

Products Images



Western blot analysis of lysates from KB cells, primary antibody was diluted at 1:1000, 4°over night