



## DEN1B rabbit pAb

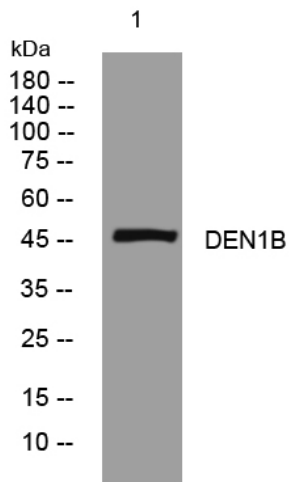
<b>Catalog No</b>	YP-Ab-11188
<b>Isotype</b>	IgG
<b>Reactivity</b>	Human; Mouse
<b>Applications</b>	WB
<b>Gene Name</b>	DENND1B C1orf218 FAM31B
<b>Protein Name</b>	DEN1B
<b>Immunogen</b>	Synthesized peptide derived from human DEN1B AA range: 325-375
<b>Specificity</b>	This antibody detects endogenous levels of DEN1B at Human/Mouse
<b>Formulation</b>	Liquid in PBS containing 50% glycerol, 0.5% BSA and 0.02% sodium azide.
<b>Source</b>	Polyclonal, Rabbit,IgG
<b>Purification</b>	The antibody was affinity-purified from rabbit serum by affinity-chromatography using specific immunogen.
<b>Dilution</b>	WB 1: 500-2000
<b>Concentration</b>	1 mg/ml
<b>Purity</b>	≥90%
<b>Storage Stability</b>	-20°C/1 year
<b>Synonyms</b>	
<b>Observed Band</b>	
<b>Cell Pathway</b>	Cytoplasm, cytosol . Cytoplasmic vesicle, clathrin-coated vesicle .
<b>Tissue Specificity</b>	Highly expressed in dendritic and natural killer cells and at lower levels in other myeloid lineage cells and in pituitary. Significantly up-regulated in effector memory T-cells as compared with naive T-cells.
<b>Function</b>	PTM:Isoform 5 is phosphorylated on Tyr-475 and Tyr-484.,similarity:Contains 1 dDENN domain.,similarity:Contains 1 DENN domain.,similarity:Contains 1 uDENN domain.,
<b>Background</b>	Clathrin (see MIM 118955)-mediated endocytosis is a major mechanism for internalization of proteins and lipids. Members of the connectdenn family, such as DENND1B, function as guanine nucleotide exchange factors (GEFs) for the early endosomal small GTPase RAB35 (MIM 604199) and bind to clathrin and clathrin adaptor protein-2 (AP2; see MIM 601024). Thus, connectdenns link RAB35 activation with the clathrin machinery (Marat and McPherson, 2010 [PubMed 20154091]).[supplied by OMIM, Nov 2010],
<b>matters needing attention</b>	Avoid repeated freezing and thawing!



**Usage suggestions**

This product can be used in immunological reaction related experiments. For more information, please consult technical personnel.

**Products Images**



Western blot analysis of lysates from 293T cells, primary antibody was diluted at 1:1000, 4° over night