



# MYT1L rabbit pAb

<b>Catalog No</b>	YP-Ab-11205
<b>Isotype</b>	IgG
<b>Reactivity</b>	Human; Mouse;Rat
<b>Applications</b>	WB;ELISA;IHC
<b>Gene Name</b>	MYT1L KIAA1106
<b>Protein Name</b>	MYT1L
<b>Immunogen</b>	Synthesized peptide derived from human MYT1L AA range: 595-645
<b>Specificity</b>	This antibody detects endogenous levels of MYT1L at Human/Mouse/Rat
<b>Formulation</b>	Liquid in PBS containing 50% glycerol, 0.5% BSA and 0.02% sodium azide.
<b>Source</b>	Polyclonal, Rabbit,IgG
<b>Purification</b>	The antibody was affinity-purified from rabbit serum by affinity-chromatography using specific immunogen.
<b>Dilution</b>	WB 1:500-2000;IHC-p 1:50-300; ELISA 2000-20000
<b>Concentration</b>	1 mg/ml
<b>Purity</b>	≥90%
<b>Storage Stability</b>	-20°C/1 year
<b>Synonyms</b>	
<b>Observed Band</b>	
<b>Cell Pathway</b>	Nucleus . Chromosome . Preferentially binds to DNA binding sites that are in an open chromatin configuration. .
<b>Tissue Specificity</b>	
<b>Function</b>	function:May function as a panneural transcription factor associated with neuronal differentiation. May play a role in the development of neurons and oligodendrogalia in the CNS.,similarity:Contains 6 C2HC-type zinc fingers.,
<b>Background</b>	This gene encodes a member of the zinc finger superfamily of transcription factors. The encoded protein belongs to a novel class of cystein-cystein-histidine-cystein zinc finger proteins that function in the developing mammalian central nervous system. Forced expression of this gene in combination with the basic helix-loop-helix transcription factor NeuroD1 and the transcription factors POU class 3 homeobox 2 and achaete-scute family basic helix-loop-helix transcription factor 1 can convert fetal and postnatal human fibroblasts into induced neuronal cells, which are able to generate action potentials. Mutations in this gene have been associated with autosomal mental retardation-39 and autism spectrum disorder. Alternative splicing results in multiple variants. [provided by RefSeq, Aug 2016],



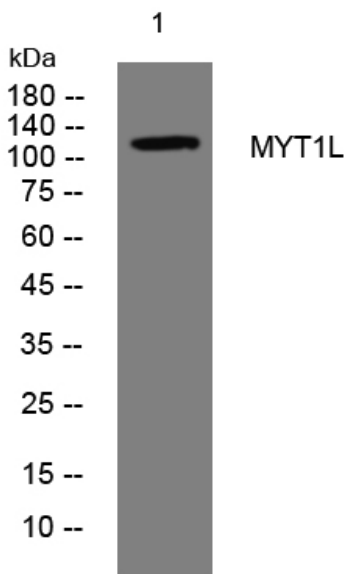
**matters needing attention**

Avoid repeated freezing and thawing!

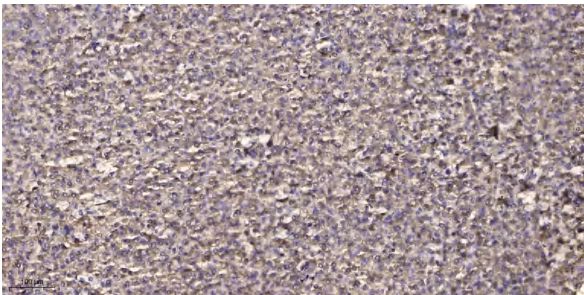
**Usage suggestions**

This product can be used in immunological reaction related experiments. For more information, please consult technical personnel.

## Products Images



Western blot analysis of lysates from A431 cells, primary antibody was diluted at 1:1000, 4° over night



Immunohistochemical analysis of paraffin-embedded human liver cancer. 1, Antibody was diluted at 1:200(4° overnight). 2, Tris-EDTA, pH9.0 was used for antigen retrieval. 3, Secondary antibody was diluted at 1:200(room temperature, 45min).