



PYDC1 rabbit pAb

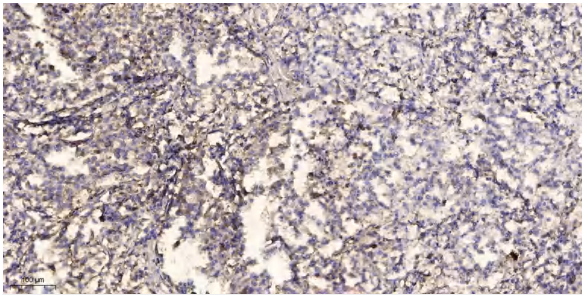
Catalog No	YP-Ab-11214
Isotype	IgG
Reactivity	Human;Rat;Mouse;
Applications	IHC;IF
Gene Name	PYDC1 ASC2 ASCI POP1 PYC1
Protein Name	PYDC1
Immunogen	Synthesized peptide derived from human PYDC1 AA range: 25-75
Specificity	This antibody detects endogenous levels of PYDC1 at Human
Formulation	Liquid in PBS containing 50% glycerol, 0.5% BSA and 0.02% sodium azide.
Source	Polyclonal, Rabbit,IgG
Purification	The antibody was affinity-purified from rabbit serum by affinity-chromatography using specific immunogen.
Dilution	IHC-p 1: 50-200. IF 1:50-200
Concentration	1 mg/ml
Purity	≥90%
Storage Stability	-20°C/1 year
Synonyms	
Observed Band	
Cell Pathway	Cytoplasm . Recruited to specks formed by PYCARD within the cytoplasm. .
Tissue Specificity	Predominantly expressed in monocytes, macrophages and granulocytes.
Function	function:Associates with apoptosis-associated specklike protein containing a CARD domain (ASC) and modulates its ability to collaborate with pyrin and cryopyrin in NF-kappa-B and pro-caspase-1 activation. Suppresses kinase activity of NF-kappa-B inhibitor kinase (IKK) complex, expression of NF-kappa-B inducible genes and inhibits NF-kappa-B activation by cytokines and LPS.,PTM:Phosphorylated.,similarity:Contains 1 DAPIN domain.,subunit:Interacts with PYCARD/ASC.,tissue specificity:Predominantly expressed in monocytes, macrophages and granulocytes.,
Background	
matters needing attention	Avoid repeated freezing and thawing!



Usage suggestions

This product can be used in immunological reaction related experiments. For more information, please consult technical personnel.

Products Images



Immunohistochemical analysis of paraffin-embedded human Squamous cell carcinoma of lung. 1, Antibody was diluted at 1:200(4° overnight). 2, Tris-EDTA,pH9.0 was used for antigen retrieval. 3,Secondary antibody was diluted at 1:200(room temperature, 45min).