



MECR rabbit pAb

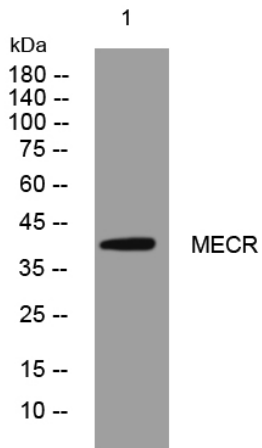
Catalog No	YP-Ab-11225
Isotype	IgG
Reactivity	Human; Mouse;Rat
Applications	WB
Gene Name	MECR NBRF1 CGI-63
Protein Name	MECR
Immunogen	Synthesized peptide derived from human MECR AA range: 160-210
Specificity	This antibody detects endogenous levels of MECR at Human/Mouse/Rat
Formulation	Liquid in PBS containing 50% glycerol, 0.5% BSA and 0.02% sodium azide.
Source	Polyclonal, Rabbit,IgG
Purification	The antibody was affinity-purified from rabbit serum by affinity-chromatography using specific immunogen.
Dilution	WB 1: 500-2000
Concentration	1 mg/ml
Purity	≥90%
Storage Stability	-20°C/1 year
Synonyms	
Observed Band	
Cell Pathway	[Isoform 1]: Mitochondrion .; [Isoform 2]: Cytoplasm . Nucleus .
Tissue Specificity	Highly expressed in skeletal and heart muscle. Expressed at lower level in placenta, liver, kidney and pancreas. Weakly or not expressed in lung.
Function	catalytic activity:Acyl-CoA + NADP(+) = trans-2,3-dehydroacyl-CoA + NADPH.,function:Catalyzes the reduction of trans-2-enoyl-CoA to acyl-CoA with chain length from C6 to C16 in an NADPH-dependent manner with preference to medium chain length substrate. May have a role in the mitochondrial synthesis of fatty acids.,similarity:Belongs to the zinc-containing alcohol dehydrogenase family. Quinone oxidoreductase subfamily.,subunit:Homodimer.,tissue specificity:Highly expressed in skeletal and heart muscle. Expressed at lower level in placenta, liver, kidney and pancreas. Weakly or not expressed in lung.,
Background	
matters needing attention	Avoid repeated freezing and thawing!



Usage suggestions

This product can be used in immunological reaction related experiments. For more information, please consult technical personnel.

Products Images



Western blot analysis of lysates from MDA-MB cells, primary antibody was diluted at 1:1000, 4° over night