



TRI66 rabbit pAb

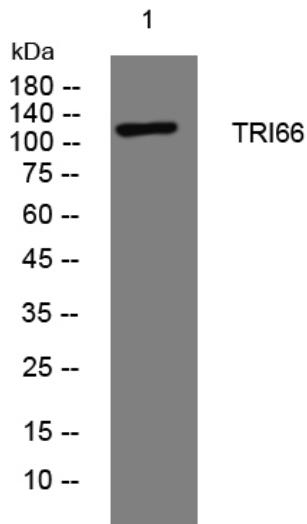
| | |
|----------------------------------|--|
| Catalog No | YP-Ab-11235 |
| Isotype | IgG |
| Reactivity | Human; Mouse |
| Applications | WB |
| Gene Name | TRIM66 C11orf29 KIAA0298 |
| Protein Name | TRI66 |
| Immunogen | Synthesized peptide derived from human TRI66 AA range: 608-658 |
| Specificity | This antibody detects endogenous levels of TRI66 at Human/Mouse |
| Formulation | Liquid in PBS containing 50% glycerol, 0.5% BSA and 0.02% sodium azide. |
| Source | Polyclonal, Rabbit,IgG |
| Purification | The antibody was affinity-purified from rabbit serum by affinity-chromatography using specific immunogen. |
| Dilution | WB 1: 500-2000 |
| Concentration | 1 mg/ml |
| Purity | ≥90% |
| Storage Stability | -20°C/1 year |
| Synonyms | |
| Observed Band | |
| Cell Pathway | Nucleus. Forms discrete foci within the centromeric chromocenter and surrounding nucleoplasm. . |
| Tissue Specificity | |
| Function | function:May function as transcription repressor; The repressive effects are mediated, at least in part, by recruitment of deacetylase activity. May play a role as negative regulator of postmeiotic genes acting through CBX3 complex formation and centromere association.,similarity:Contains 1 bromo domain.,similarity:Contains 1 PHD-type zinc finger.,similarity:Contains 2 B box-type zinc fingers.,subcellular location:Forms discrete foci within the centromeric chromocenter and surrounding nucleoplasm.,subunit:Can form homo- and heterodimers. Interacts with CBX5, CBX1 and CBX3 via PxVxL motif., |
| Background | |
| matters needing attention | Avoid repeated freezing and thawing! |



Usage suggestions

This product can be used in immunological reaction related experiments. For more information, please consult technical personnel.

Products Images



Western blot analysis of lysates from A549 cells,
primary antibody was diluted at 1:1000, 4° over night