

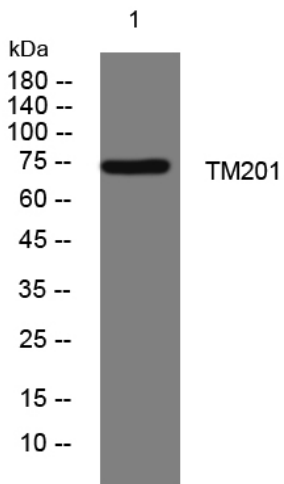


## TM201 rabbit pAb

<b>Catalog No</b>	YP-Ab-11262
<b>Isotype</b>	IgG
<b>Reactivity</b>	Human; Mouse
<b>Applications</b>	WB
<b>Gene Name</b>	TMEM201 NET5 SAMP1
<b>Protein Name</b>	TM201
<b>Immunogen</b>	Synthesized peptide derived from human TM201 AA range: 290-340
<b>Specificity</b>	This antibody detects endogenous levels of TM201 at Human/Mouse
<b>Formulation</b>	Liquid in PBS containing 50% glycerol, 0.5% BSA and 0.02% sodium azide.
<b>Source</b>	Polyclonal, Rabbit,IgG
<b>Purification</b>	The antibody was affinity-purified from rabbit serum by affinity-chromatography using specific immunogen.
<b>Dilution</b>	WB 1: 500-2000
<b>Concentration</b>	1 mg/ml
<b>Purity</b>	≥90%
<b>Storage Stability</b>	-20°C/1 year
<b>Synonyms</b>	
<b>Observed Band</b>	
<b>Cell Pathway</b>	[Isoform 2]: Nucleus inner membrane ; Multi-pass membrane protein . Cytoplasm, cytoskeleton, spindle pole . The C-terminal of isoform 2 is located on the nucleoplasmic side. During interphase, isoform 2 is distributed in the inner nuclear membrane in distinct micro-domains and during mitosis, it is found in the ER but it also localizes to the polar regions of the mitotic spindle. .
<b>Tissue Specificity</b>	
<b>Function</b>	
<b>Background</b>	
<b>matters needing attention</b>	Avoid repeated freezing and thawing!
<b>Usage suggestions</b>	This product can be used in immunological reaction related experiments. For more information, please consult technical personnel.



## Products Images



Western blot analysis of lysates from KB cells, primary antibody was diluted at 1:1000, 4° over night