

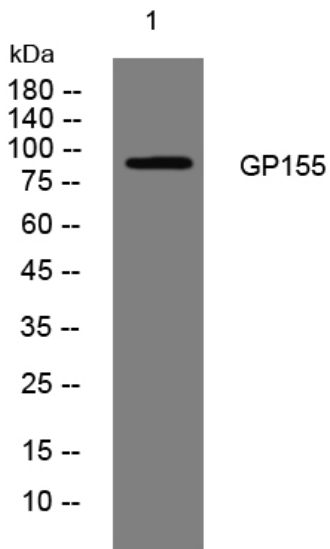


GP155 rabbit pAb

Catalog No	YP-Ab-11288
Isotype	IgG
Reactivity	Human;Rat;Mouse;
Applications	WB
Gene Name	GPR155 PGR22
Protein Name	GP155
Immunogen	Synthesized peptide derived from human GP155 AA range: 251-301
Specificity	This antibody detects endogenous levels of GP155 at Human
Formulation	Liquid in PBS containing 50% glycerol, 0.5% BSA and 0.02% sodium azide.
Source	Polyclonal, Rabbit,IgG
Purification	The antibody was affinity-purified from rabbit serum by affinity-chromatography using specific immunogen.
Dilution	WB 1: 500-2000
Concentration	1 mg/ml
Purity	≥90%
Storage Stability	-20°C/1 year
Synonyms	
Observed Band	
Cell Pathway	Membrane; Multi-pass membrane protein.
Tissue Specificity	
Function	similarity:Contains 1 DEP domain.,
Background	
matters needing attention	Avoid repeated freezing and thawing!
Usage suggestions	This product can be used in immunological reaction related experiments. For more information, please consult technical personnel.



Products Images



Western blot analysis of lysates from A549 cells,
primary antibody was diluted at 1:1000, 4° over night