

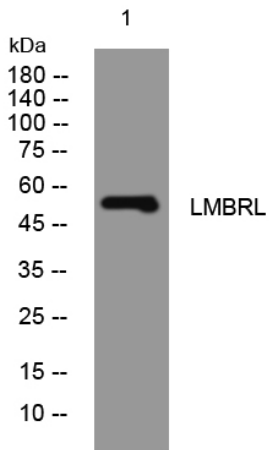


LMBRL rabbit pAb

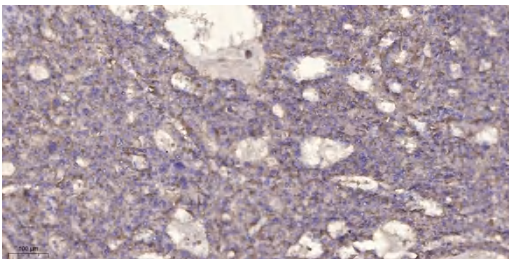
Catalog No	YP-Ab-11301
Isotype	IgG
Reactivity	Human; Mouse
Applications	WB;IHC
Gene Name	LMBR1L KIAA1174 LIMR UNQ458/PRO783
Protein Name	LMBRL
Immunogen	Synthesized peptide derived from human LMBRL AA range: 220-270
Specificity	This antibody detects endogenous levels of LMBRL at Human/Mouse
Formulation	Liquid in PBS containing 50% glycerol, 0.5% BSA and 0.02% sodium azide.
Source	Polyclonal, Rabbit,IgG
Purification	The antibody was affinity-purified from rabbit serum by affinity-chromatography using specific immunogen.
Dilution	WB 1:500-2000;IHC-p 1:50-300
Concentration	1 mg/ml
Purity	≥90%
Storage Stability	-20°C/1 year
Synonyms	
Observed Band	
Cell Pathway	Cell membrane ; Multi-pass membrane protein . Endoplasmic reticulum membrane ; Multi-pass membrane protein .
Tissue Specificity	Expressed in testis, pituitary gland, adrenal gland, trachea, placenta, thymus, cerebellum, stomach, mammary gland, spinal cord. A weaker expression is detected in colon, pancreas, and prostate.
Function	developmental stage:Expressed in fetal kidney and lung.,function:Probable LCN1 receptor. May mediate LCN1 endocytosis.,similarity:Belongs to the LIMR family.,tissue specificity:Expressed in testis, pituitary gland, adrenal gland, trachea, placenta, thymus, cerebellum, stomach, mammary gland, spinal cord. A weaker expression is detected in colon, pancreas, and prostate.,
Background	
matters needing attention	Avoid repeated freezing and thawing!
Usage suggestions	This product can be used in immunological reaction related experiments. For more information, please consult technical personnel.



Products Images



Western blot analysis of lysates from A549 cells, primary antibody was diluted at 1:1000, 4° over night



Immunohistochemical analysis of paraffin-embedded human liver cancer. 1, Antibody was diluted at 1:200(4° overnight). 2, Tris-EDTA, pH9.0 was used for antigen retrieval. 3, Secondary antibody was diluted at 1:200(room temperature, 45min).