



## NDK7 rabbit pAb

<b>Catalog No</b>	YP-Ab-11311
<b>Isotype</b>	IgG
<b>Reactivity</b>	Human; Mouse;Rat
<b>Applications</b>	WB
<b>Gene Name</b>	NME7
<b>Protein Name</b>	NDK7
<b>Immunogen</b>	Synthesized peptide derived from human NDK7 AA range: 152-202
<b>Specificity</b>	This antibody detects endogenous levels of NDK7 at Human/Mouse/Rat
<b>Formulation</b>	Liquid in PBS containing 50% glycerol, 0.5% BSA and 0.02% sodium azide.
<b>Source</b>	Polyclonal, Rabbit,IgG
<b>Purification</b>	The antibody was affinity-purified from rabbit serum by affinity-chromatography using specific immunogen.
<b>Dilution</b>	WB 1: 500-2000
<b>Concentration</b>	1 mg/ml
<b>Purity</b>	≥90%
<b>Storage Stability</b>	-20°C/1 year
<b>Synonyms</b>	
<b>Observed Band</b>	
<b>Cell Pathway</b>	centrosome,
<b>Tissue Specificity</b>	
<b>Function</b>	catalytic activity:ATP + nucleoside diphosphate = ADP + nucleoside triphosphate.,cofactor:Magnesium.,function:Major role in the synthesis of nucleoside triphosphates other than ATP. The ATP gamma phosphate is transferred to the NDP beta phosphate via a ping-pong mechanism, using a phosphorylated active-site intermediate.,similarity:Belongs to the NDK family.,similarity:Contains 1 DM10 domain.,
<b>Background</b>	This gene encodes a member of the non-metastatic expressed family of nucleoside diphosphate kinases. Members of this family are enzymes that catalyzes phosphate transfer from nucleoside triphosphates to nucleoside diphosphates. This protein contains two kinase domains, one of which is involved in autophosphorylation and the other may be inactive. This protein localizes to the centrosome and functions as a component of the gamma-tubulin ring complex which plays a role in microtubule organization. Mutations in this gene may be associated with venous thromboembolism. Alternate splicing results in multiple transcript variants. [provided by RefSeq, Sep 2016],



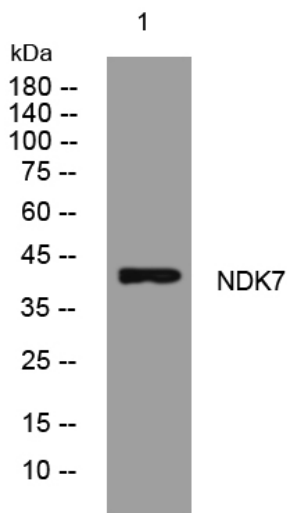
**matters needing attention**

Avoid repeated freezing and thawing!

**Usage suggestions**

This product can be used in immunological reaction related experiments. For more information, please consult technical personnel.

**Products Images**



Western blot analysis of lysates from HpeG2 cells, primary antibody was diluted at 1:1000, 4° over night