

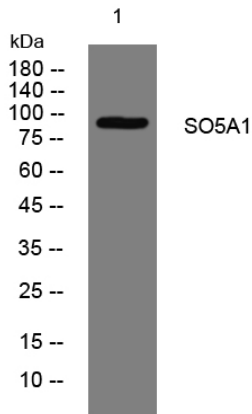


SO5A1 rabbit pAb

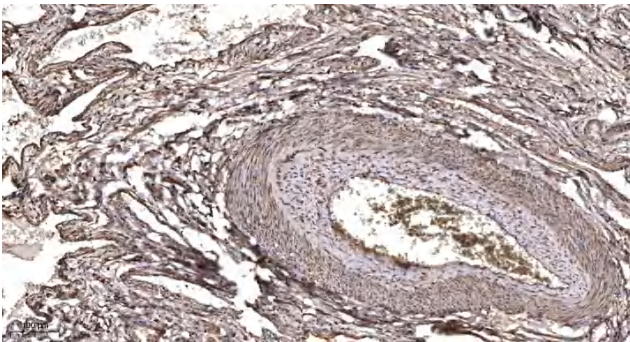
| | |
|----------------------------------|---|
| Catalog No | YP-Ab-11313 |
| Isotype | IgG |
| Reactivity | Human;Rat;Mouse; |
| Applications | WB;IHC |
| Gene Name | SLCO5A1 OATP5A1 SLC21A15 |
| Protein Name | SO5A1 |
| Immunogen | Synthesized peptide derived from human SO5A1 AA range: 292-342 |
| Specificity | This antibody detects endogenous levels of SO5A1 at Human |
| Formulation | Liquid in PBS containing 50% glycerol, 0.5% BSA and 0.02% sodium azide. |
| Source | Polyclonal, Rabbit,IgG |
| Purification | The antibody was affinity-purified from rabbit serum by affinity-chromatography using specific immunogen. |
| Dilution | WB 1:500-2000;IHC-p 1:50-300 |
| Concentration | 1 mg/ml |
| Purity | ≥90% |
| Storage Stability | -20°C/1 year |
| Synonyms | |
| Observed Band | |
| Cell Pathway | Cell membrane; Multi-pass membrane protein. |
| Tissue Specificity | |
| Function | similarity:Belongs to the organo anion transporter (TC 2.A.60) family., |
| Background | This gene encodes a 12 transmembrane domain protein that is a member of the solute carrier organic anion transporter superfamily. Alternative splicing results in multiple transcript variants. [provided by RefSeq, Mar 2009], |
| matters needing attention | Avoid repeated freezing and thawing! |
| Usage suggestions | This product can be used in immunological reaction related experiments. For more information, please consult technical personnel. |



Products Images



Western blot analysis of lysates from HEK293 cells, primary antibody was diluted at 1:1000, 4° over night



Immunohistochemical analysis of paraffin-embedded human oophoroma. 1, Antibody was diluted at 1:200(4° overnight). 2, Tris-EDTA, pH9.0 was used for antigen retrieval. 3, Secondary antibody was diluted at 1:200(room temperature, 45min).