



# SCMC1 rabbit pAb

<b>Catalog No</b>	YP-Ab-11319
<b>Isotype</b>	IgG
<b>Reactivity</b>	Human; Mouse
<b>Applications</b>	WB;ELISA;IHC
<b>Gene Name</b>	SLC25A24 APC1 MCSC1 SCAMC1
<b>Protein Name</b>	SCMC1
<b>Immunogen</b>	Synthesized peptide derived from human SCMC1 AA range: 162-212
<b>Specificity</b>	This antibody detects endogenous levels of SCMC1 at Human/Mouse
<b>Formulation</b>	Liquid in PBS containing 50% glycerol, 0.5% BSA and 0.02% sodium azide.
<b>Source</b>	Polyclonal, Rabbit,IgG
<b>Purification</b>	The antibody was affinity-purified from rabbit serum by affinity-chromatography using specific immunogen.
<b>Dilution</b>	WB 1:500-2000;IHC-p 1:50-300; ELISA 2000-20000
<b>Concentration</b>	1 mg/ml
<b>Purity</b>	≥90%
<b>Storage Stability</b>	-20°C/1 year
<b>Synonyms</b>	
<b>Observed Band</b>	
<b>Cell Pathway</b>	Mitochondrion inner membrane ; Multi-pass membrane protein .
<b>Tissue Specificity</b>	Present in various cell lines (at protein level). Expressed in all tissues tested. Highly expressed in testis, expressed at intermediate level in small intestine and pancreas, and weakly expressed in kidney, spleen, liver, skeletal muscle and heart.
<b>Function</b>	function:Calcium-dependent mitochondrial solute carrier. Mitochondrial solute carriers shuttle metabolites, nucleotides, and cofactors through the mitochondrial inner membrane. May act as a ATP-Mg/Pi exchanger that mediates the transport of Mg-ATP in exchange for phosphate, catalyzing the net uptake or efflux of adenine nucleotides into or from the mitochondria.,similarity:Belongs to the mitochondrial carrier family.,similarity:Contains 3 Solcar repeats.,similarity:Contains 4 EF-hand domains.,tissue specificity:Present in various cell lines (at protein level). Expressed in all tissues tested. Highly expressed in testis, expressed at intermediate level in small intestine and pancreas, and weakly expressed in kidney, spleen, liver, skeletal muscle and heart.,
<b>Background</b>	This gene encodes a carrier protein that transports ATP-Mg exchanging it for phosphate. Multiple transcript variants encoding different isoforms have been



found for this gene. [provided by RefSeq, May 2012],

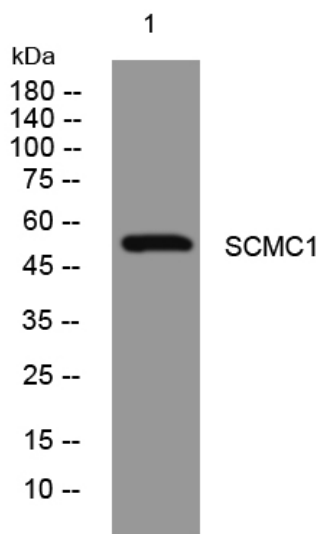
**matters needing attention**

Avoid repeated freezing and thawing!

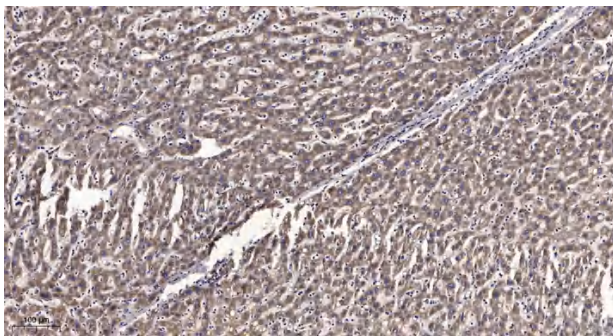
**Usage suggestions**

This product can be used in immunological reaction related experiments. For more information, please consult technical personnel.

## Products Images



Western blot analysis of lysates from Jarkat cells, primary antibody was diluted at 1:1000, 4° over night



Immunohistochemical analysis of paraffin-embedded human liver cancer. 1, Antibody was diluted at 1:200(4° overnight). 2, Tris-EDTA, pH9.0 was used for antigen retrieval. 3, Secondary antibody was diluted at 1:200(room temperature, 45min).