



NAT8L rabbit pAb

Catalog No	YP-Ab-11327
Isotype	IgG
Reactivity	Human; Mouse;Rat
Applications	WB;ELISA;IHC
Gene Name	NAT8L CML3
Protein Name	NAT8L
Immunogen	Synthesized peptide derived from human NAT8L AA range: 218-268
Specificity	This antibody detects endogenous levels of NAT8L at Human/Mouse/Rat
Formulation	Liquid in PBS containing 50% glycerol, 0.5% BSA and 0.02% sodium azide.
Source	Polyclonal, Rabbit,IgG
Purification	The antibody was affinity-purified from rabbit serum by affinity-chromatography using specific immunogen.
Dilution	WB 1:500-2000;IHC-p 1:50-300; ELISA 2000-20000
Concentration	1 mg/ml
Purity	≥90%
Storage Stability	-20°C/1 year
Synonyms	
Observed Band	
Cell Pathway	Cytoplasm . Microsome membrane ; Single-pass membrane protein . Mitochondrion membrane ; Single-pass membrane protein . Endoplasmic reticulum membrane ; Single-pass membrane protein . Its enzymatic activity contribution is quantitatively larger in mitochondrial compartment than in extramitochondrial compartment. .
Tissue Specificity	Expressed in brain.
Function	similarity:Belongs to the camello family.,similarity:Contains 1 N-acetyltransferase domain.,
Background	This gene encodes a single-pass membrane protein, which contains a conserved sequence of the GCN5 or NAT superfamily of N-acetyltransferases and is a member of the N-acyltransferase (NAT) superfamily. This protein is a neuron-specific protein and is the N-acetylaspartate (NAA) biosynthetic enzyme, catalyzing the NAA synthesis from L-aspartate and acetyl-CoA. NAA is a major storage and transport form of acetyl coenzyme A specific to the nervous system. The gene mutation results in primary NAA deficiency (hypoacetylaspartia). [provided by RefSeq, Dec 2010],



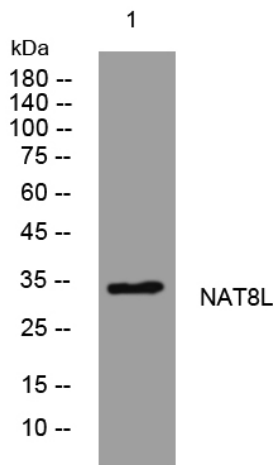
matters needing attention

Avoid repeated freezing and thawing!

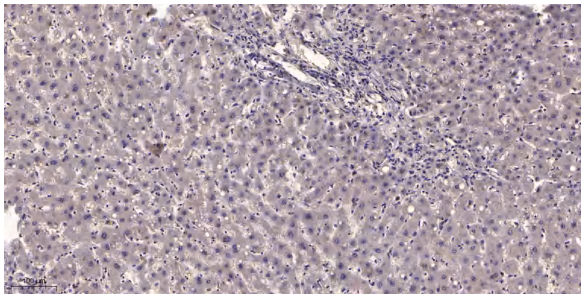
Usage suggestions

This product can be used in immunological reaction related experiments. For more information, please consult technical personnel.

Products Images



Western blot analysis of lysates from U2OS cells, primary antibody was diluted at 1:1000, 4° over night



Immunohistochemical analysis of paraffin-embedded human liver cancer. 1, Antibody was diluted at 1:200(4° overnight). 2, Tris-EDTA, pH9.0 was used for antigen retrieval. 3, Secondary antibody was diluted at 1:200(room temperature, 45min).