

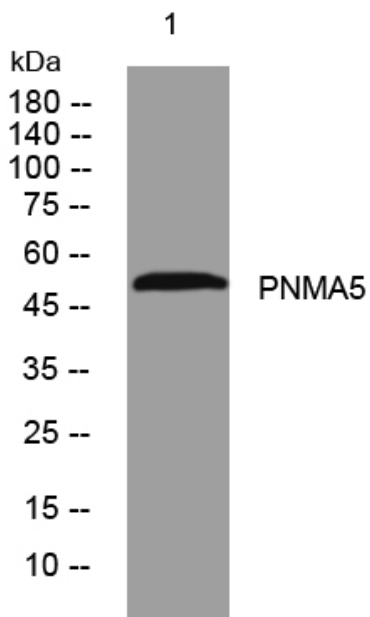


# PNMA5 rabbit pAb

<b>Catalog No</b>	YP-Ab-11348
<b>Isotype</b>	IgG
<b>Reactivity</b>	Human; Mouse
<b>Applications</b>	WB
<b>Gene Name</b>	PNMA5 KIAA1934
<b>Protein Name</b>	PNMA5
<b>Immunogen</b>	Synthesized peptide derived from human PNMA5 AA range: 160-210
<b>Specificity</b>	This antibody detects endogenous levels of PNMA5 at Human/Mouse
<b>Formulation</b>	Liquid in PBS containing 50% glycerol, 0.5% BSA and 0.02% sodium azide.
<b>Source</b>	Polyclonal, Rabbit,IgG
<b>Purification</b>	The antibody was affinity-purified from rabbit serum by affinity-chromatography using specific immunogen.
<b>Dilution</b>	WB 1: 500-2000
<b>Concentration</b>	1 mg/ml
<b>Purity</b>	≥90%
<b>Storage Stability</b>	-20°C/1 year
<b>Synonyms</b>	
<b>Observed Band</b>	
<b>Cell Pathway</b>	
<b>Tissue Specificity</b>	Expressed in the brain.
<b>Function</b>	similarity:Belongs to the PNMA family.,
<b>Background</b>	This gene encodes a member of the paraneoplastic Ma antigen protein family. These proteins have been implicated in the development of paraneoplastic disorders resulting from an immune response directed against them. Paraneoplastic disorders are the result of an abnormal immune response to a tumor. Multiple alternatively spliced variants, encoding the same protein, have been identified. [provided by RefSeq, Oct 2011],
<b>matters needing attention</b>	Avoid repeated freezing and thawing!
<b>Usage suggestions</b>	This product can be used in immunological reaction related experiments. For more information, please consult technical personnel.



## Products Images



Western blot analysis of lysates from 3T3 cells, primary antibody was diluted at 1:1000, 4° over night