



# CASC3 rabbit pAb

<b>Catalog No</b>	YP-Ab-11356
<b>Isotype</b>	IgG
<b>Reactivity</b>	Human; Mouse;Rat
<b>Applications</b>	WB
<b>Gene Name</b>	CASC3 MLN51
<b>Protein Name</b>	CASC3
<b>Immunogen</b>	Synthesized peptide derived from human CASC3 AA range: 434-484
<b>Specificity</b>	This antibody detects endogenous levels of CASC3 at Human/Mouse/Rat
<b>Formulation</b>	Liquid in PBS containing 50% glycerol, 0.5% BSA and 0.02% sodium azide.
<b>Source</b>	Polyclonal, Rabbit,IgG
<b>Purification</b>	The antibody was affinity-purified from rabbit serum by affinity-chromatography using specific immunogen.
<b>Dilution</b>	WB 1: 500-2000
<b>Concentration</b>	1 mg/ml
<b>Purity</b>	≥90%
<b>Storage Stability</b>	-20°C/1 year
<b>Synonyms</b>	
<b>Observed Band</b>	
<b>Cell Pathway</b>	Cytoplasm . Cytoplasm, perinuclear region . Nucleus . Nucleus speckle . Cytoplasm, Stress granule . Cytoplasm, Cytoplasmic ribonucleoprotein granule . Cell projection, dendrite . Shuttles between the nucleus and the cytoplasm in a XPO1/CRM1-dependent manner. Transported to the cytoplasm as part of the exon junction complex (EJC) bound to mRNA (PubMed:15166247). In nuclear speckles, colocalizes with MAGOH. Under stress conditions, colocalizes with FMR1 and TIA1, but not MAGOH and RBM8A EJC core factors, in cytoplasmic stress granules (PubMed:17652158). In the dendrites of hippocampal neurons, localizes to dendritic ribonucleoprotein granules (By similarity). .
<b>Tissue Specificity</b>	Widely expressed. Overexpressed in breast cancers and metastasis, as well as in gastric cancers.
<b>Function</b>	domain:The coiled coil domain may be involved in oligomerization.,function:Component of the dendritic ribonucleoprotein particles (RNPs) in hippocampal neurons. May play a role in mRNA transport.,PTM:Phosphorylated.,subcellular location:Predominantly found in the perinuclear region (By similarity). Shuttles between the nucleus and the cytoplasm in a CRM1-dependent manner.,subunit:Interacts with STAU in an RNA-dependent manner (By similarity). Forms homo-oligomers.,tissue specificity:Widely expressed. Overexpressed in breast cancers and metastasis, as well as in gastric



cancers.,

**Background**

The product of this gene is a core component of the exon junction complex (EJC), a protein complex that is deposited on spliced mRNAs at exon-exon junctions and functions in nonsense-mediated mRNA decay (NMD). The encoded protein binds RNA and interacts with two other EJC core components. It is predominantly located in the cytoplasm, but shuttles into the nucleus where it localizes to nuclear speckles. [provided by RefSeq, Jul 2008],

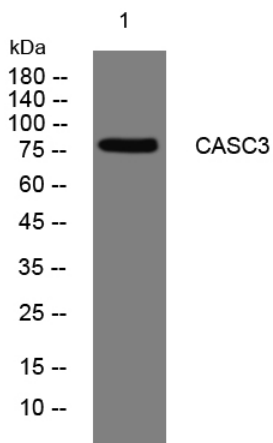
**matters needing attention**

Avoid repeated freezing and thawing!

**Usage suggestions**

This product can be used in immunological reaction related experiments. For more information, please consult technical personnel.

## Products Images



Western blot analysis of lysates from KB cells, primary antibody was diluted at 1:1000, 4°over night