



S38A8 rabbit pAb

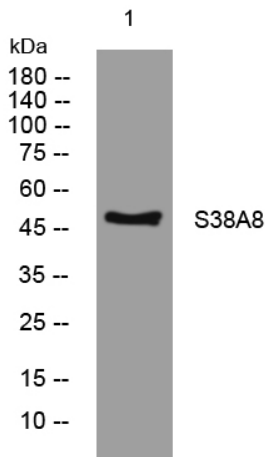
Catalog No	YP-Ab-11360
Isotype	IgG
Reactivity	Human; Mouse
Applications	WB
Gene Name	SLC38A8
Protein Name	S38A8
Immunogen	Synthesized peptide derived from human S38A8 AA range: 191-241
Specificity	This antibody detects endogenous levels of S38A8 at Human/Mouse
Formulation	Liquid in PBS containing 50% glycerol, 0.5% BSA and 0.02% sodium azide.
Source	Polyclonal, Rabbit,IgG
Purification	The antibody was affinity-purified from rabbit serum by affinity-chromatography using specific immunogen.
Dilution	WB 1: 500-2000
Concentration	1 mg/ml
Purity	≥90%
Storage Stability	-20°C/1 year
Synonyms	
Observed Band	
Cell Pathway	Membrane ; Multi-pass membrane protein .
Tissue Specificity	Expressed in fetal and adult brain, and spinal cord. In the brain, it is localized in the cell body and axon of the majority of neuronal cells and in a subset of glial cells. Found throughout the neuronal retina, with higher expression levels in the inner and outer plexiform layers and the photoreceptor layer. Very weak expression is also present in the kidneys, thymus, and testes.
Function	function:Putative sodium-dependent amino acid/proton antiporter.,similarity:Belongs to the amino acid/polyamine transporter 2 family.,
Background	This gene encodes a putative sodium-dependent amino-acid/proton antiporter. The protein has eleven transmembrane domains, an extracellular N-terminus and an intracellular C-terminal tail. The protein is a member of the SLC38 sodium-coupled neutral amino acid transporter family of proteins. Mutations in this gene result in foveal hypoplasia with or without optic nerve misrouting and/or anterior segment dysgenesis. [provided by RefSeq, May 2014],
matters needing attention	Avoid repeated freezing and thawing!



Usage suggestions

This product can be used in immunological reaction related experiments. For more information, please consult technical personnel.

Products Images



Western blot analysis of lysates from Jarkat cells,
primary antibody was diluted at 1:1000, 4°over night