



# VAPA rabbit pAb

<b>Catalog No</b>	YP-Ab-11383
<b>Isotype</b>	IgG
<b>Reactivity</b>	Human; Mouse;Rat
<b>Applications</b>	WB
<b>Gene Name</b>	VAPA VAP33
<b>Protein Name</b>	VAPA
<b>Immunogen</b>	Synthesized peptide derived from human VAPA AA range: 34-84
<b>Specificity</b>	This antibody detects endogenous levels of VAPA at Human/Mouse/Rat
<b>Formulation</b>	Liquid in PBS containing 50% glycerol, 0.5% BSA and 0.02% sodium azide.
<b>Source</b>	Polyclonal, Rabbit,IgG
<b>Purification</b>	The antibody was affinity-purified from rabbit serum by affinity-chromatography using specific immunogen.
<b>Dilution</b>	WB 1: 500-2000
<b>Concentration</b>	1 mg/ml
<b>Purity</b>	≥90%
<b>Storage Stability</b>	-20°C/1 year
<b>Synonyms</b>	
<b>Observed Band</b>	
<b>Cell Pathway</b>	Endoplasmic reticulum membrane ; Single-pass type IV membrane protein . Cell membrane ; Single-pass type IV membrane protein . Cell junction, tight junction . Nucleus membrane . Present in the plasma membrane and in intracellular vesicles, together with SNARE proteins. May also associate with the cytoskeleton. Colocalizes with OCLN at the tight junction in polarized epithelial cells. .
<b>Tissue Specificity</b>	Ubiquitous.
<b>Function</b>	function:May play a role in vesicle trafficking.,similarity:Contains 1 MSP domain.,subcellular location:Present in the plasma membrane and in intracellular vesicles, together with SNARE proteins. May also associate with the cytoskeleton. Colocalizes with OCLN at the tight junction in polarized epithelial cells.,subunit:Homodimer, and heterodimer with VAPB. Interacts with VAMP1, VAMP2, STX1A, BET1, SEC22C and with the C-terminal domain of OCLN. Interacts with OSBPL1A.,tissue specificity:Ubiquitous.,
<b>Background</b>	The protein encoded by this gene is a type IV membrane protein. It is present in the plasma membrane and intracellular vesicles. It may also be associated with the cytoskeleton. This protein may function in vesicle trafficking, membrane fusion, protein complex assembly and cell motility. Alternative splicing occurs at this locus and two transcript variants encoding distinct isoforms have been



identified. [provided by RefSeq, Jul 2008],

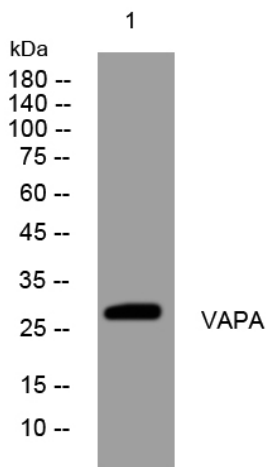
**matters needing attention**

Avoid repeated freezing and thawing!

**Usage suggestions**

This product can be used in immunological reaction related experiments. For more information, please consult technical personnel.

**Products Images**



Western blot analysis of lysates from K562 cells, primary antibody was diluted at 1:1000, 4° over night