



# AP4E1 rabbit pAb

|                           |  |
|---------------------------|--|
| <b>Catalog No</b>         | YP-Ab-11384  |
| <b>Isotype</b>            | IgG  |
| <b>Reactivity</b>         | Human; Mouse   |
| <b>Applications</b>       | WB   |
| <b>Gene Name</b>          | AP4E1  |
| <b>Protein Name</b>       | AP4E1  |
| <b>Immunogen</b>          | Synthesized peptide derived from human AP4E1 AA range: 104-154   |
| <b>Specificity</b>        | This antibody detects endogenous levels of AP4E1 at Human/Mouse  |
| <b>Formulation</b>        | Liquid in PBS containing 50% glycerol, 0.5% BSA and 0.02% sodium azide.  |
| <b>Source</b>             | Polyclonal, Rabbit,IgG   |
| <b>Purification</b>       | The antibody was affinity-purified from rabbit serum by affinity-chromatography using specific immunogen.  |
| <b>Dilution</b>           | WB 1: 500-2000   |
| <b>Concentration</b>      | 1 mg/ml  |
| <b>Purity</b>             | ≥90%   |
| <b>Storage Stability</b>  | -20°C/1 year   |
| <b>Synonyms</b>           |  |
| <b>Observed Band</b>      |  |
| <b>Cell Pathway</b>       | Golgi apparatus, trans-Golgi network membrane ; Peripheral membrane protein .  |
| <b>Tissue Specificity</b> | Widely expressed.  |
| <b>Function</b>           | function:Subunit of novel type of clathrin- or non-clathrin-associated protein coat involved in targeting proteins from the trans-Golgi network (TGN) to the endosomal-lysosomal system.,similarity:Belongs to the adaptor complexes large subunit family.,subcellular location:Associated with the trans-Golgi network. Found in soma and dendritic shafts of neuronal cells.,subunit:Adapter-like complex 4 (AP-4) is a heterotetramer composed of two large adaptins (epsilon-type subunit AP4E1 and beta-type subunit AP4B1), a medium adaptin (mu-type subunit AP4M1) and a small adaptin (sigma-type AP4S1).,tissue specificity:Widely expressed., |
| <b>Background</b>         | This gene encodes a member of the adaptor complexes large subunit protein family. These proteins are components of the heterotetrameric adaptor protein complexes, which play important roles in the secretory and endocytic pathways by mediating vesicle formation and sorting of integral membrane proteins. The encoded protein is a large subunit of adaptor protein complex-4, which is associated with both clathrin- and nonclathrin-coated vesicles. Disruption of this   |



gene may be associated with cerebral palsy. Alternatively spliced transcript variants encoding multiple isoforms have been observed for this gene. [provided by RefSeq, Nov 2011],

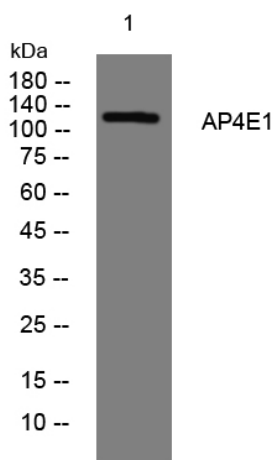
**matters needing attention**

Avoid repeated freezing and thawing!

**Usage suggestions**

This product can be used in immunological reaction related experiments. For more information, please consult technical personnel.

**Products Images**



Western blot analysis of lysates from U2OS cells, primary antibody was diluted at 1:1000, 4° over night