



RT4I1 rabbit pAb

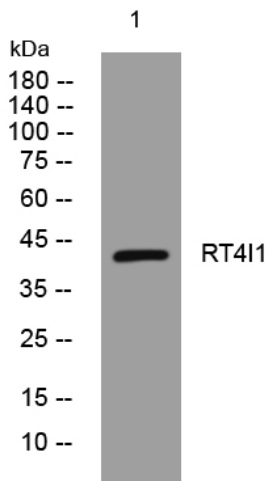
Catalog No	YP-Ab-11385
Isotype	IgG
Reactivity	Human; Mouse
Applications	WB
Gene Name	RTN4IP1 NIMP
Protein Name	RT4I1
Immunogen	Synthesized peptide derived from human RT4I1 AA range: 282-332
Specificity	This antibody detects endogenous levels of RT4I1 at Human/Mouse
Formulation	Liquid in PBS containing 50% glycerol, 0.5% BSA and 0.02% sodium azide.
Source	Polyclonal, Rabbit,IgG
Purification	The antibody was affinity-purified from rabbit serum by affinity-chromatography using specific immunogen.
Dilution	WB 1: 500-2000
Concentration	1 mg/ml
Purity	≥90%
Storage Stability	-20°C/1 year
Synonyms	
Observed Band	
Cell Pathway	Mitochondrion outer membrane . Colocalizes with the endoplasmic reticulum HSPA5 at spots corresponding to contacts with mitochondria. .
Tissue Specificity	Widely expressed in mitochondria-enriched tissues. Found in heart, muscle, kidney, liver, brain and placenta.
Function	function:Appears to be a potent inhibitor of regeneration following spinal cord injury.,similarity:Belongs to the zinc-containing alcohol dehydrogenase family. Quinone oxidoreductase subfamily.,subunit:Interacts with RTN4, UQCRC1 and UQCRC2.,tissue specificity:Widely expressed in mitochondria-enriched tissues. Found in heart, muscle, kidney, liver, brain and placenta.,
Background	This gene encodes a mitochondrial protein that interacts with reticulon 4, which is a potent inhibitor of regeneration following spinal cord injury. This interaction may be important for reticulon-induced inhibition of neurite growth. Mutations in this gene can cause optic atrophy 10, with or without ataxia, mental retardation, and seizures. There is a pseudogene for this gene on chromosome 12. Alternative splicing results in multiple transcript variants. [provided by RefSeq, Jan 2016],
matters needing attention	Avoid repeated freezing and thawing!



Usage suggestions

This product can be used in immunological reaction related experiments. For more information, please consult technical personnel.

Products Images



Western blot analysis of lysates from HpeG2 cells, primary antibody was diluted at 1:1000, 4° over night