

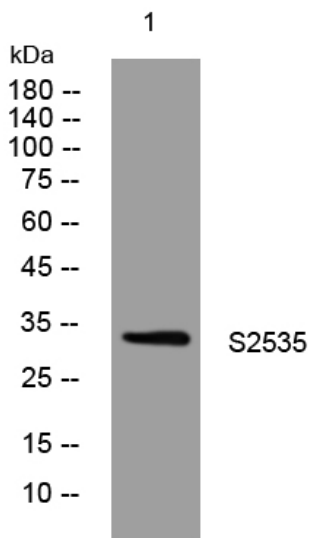


S2535 rabbit pAb

Catalog No	YP-Ab-11448
Isotype	IgG
Reactivity	Human; Mouse
Applications	WB
Gene Name	SLC25A35
Protein Name	S2535
Immunogen	Synthesized peptide derived from human S2535 AA range: 154-204
Specificity	This antibody detects endogenous levels of S2535 at Human/Mouse
Formulation	Liquid in PBS containing 50% glycerol, 0.5% BSA and 0.02% sodium azide.
Source	Polyclonal, Rabbit,IgG
Purification	The antibody was affinity-purified from rabbit serum by affinity-chromatography using specific immunogen.
Dilution	WB 1: 500-2000
Concentration	1 mg/ml
Purity	≥90%
Storage Stability	-20°C/1 year
Synonyms	
Observed Band	
Cell Pathway	Mitochondrion inner membrane ; Multi-pass membrane protein .
Tissue Specificity	
Function	similarity:Belongs to the mitochondrial carrier family.,similarity:Contains 3 Solcar repeats.,
Background	SLC25A35 belongs to the SLC25 family of mitochondrial carrier proteins (Haitina et al., 2006 [PubMed 16949250]).[supplied by OMIM, Mar 2008],
matters needing attention	Avoid repeated freezing and thawing!
Usage suggestions	This product can be used in immunological reaction related experiments. For more information, please consult technical personnel.



Products Images



Western blot analysis of lysates from SW480 cells,
primary antibody was diluted at 1:1000, 4° over night