



# U17L5 rabbit pAb

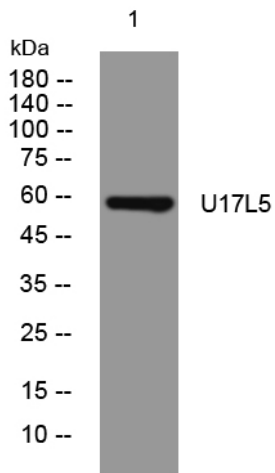
<b>Catalog No</b>	YP-Ab-11457
<b>Isotype</b>	IgG
<b>Reactivity</b>	Human;Rat;Mouse;
<b>Applications</b>	WB
<b>Gene Name</b>	USP17L5
<b>Protein Name</b>	U17L5
<b>Immunogen</b>	Synthesized peptide derived from human U17L5 AA range: 308-358
<b>Specificity</b>	This antibody detects endogenous levels of U17L5 at Human
<b>Formulation</b>	Liquid in PBS containing 50% glycerol, 0.5% BSA and 0.02% sodium azide.
<b>Source</b>	Polyclonal, Rabbit,IgG
<b>Purification</b>	The antibody was affinity-purified from rabbit serum by affinity-chromatography using specific immunogen.
<b>Dilution</b>	WB 1: 500-2000
<b>Concentration</b>	1 mg/ml
<b>Purity</b>	≥90%
<b>Storage Stability</b>	-20°C/1 year
<b>Synonyms</b>	
<b>Observed Band</b>	
<b>Cell Pathway</b>	Nucleus . Endoplasmic reticulum .
<b>Tissue Specificity</b>	
<b>Function</b>	catalytic activity:Ubiquitin C-terminal thioester + H(2)O = ubiquitin + a thiol.,caution:The RS447 megasatellite DNA is a highly polymorphic conserved tandem repetitive sequence which contains a copy of USP17. It is present with an interindividual variation in copy number and between 20 to 103 copies can be found in the genome both on chromosome 4 and chromosome 8.,function:Functions in cell apoptosis. Cleaves ubiquitin fusion protein substrates.,similarity:Belongs to the peptidase C19 family. USP17 subfamily.,
<b>Background</b>	
<b>matters needing attention</b>	Avoid repeated freezing and thawing!



### Usage suggestions

This product can be used in immunological reaction related experiments. For more information, please consult technical personnel.

## Products Images



Western blot analysis of lysates from 3T3 cells, primary antibody was diluted at 1:1000, 4° over night