



# CHP3 rabbit pAb

<b>Catalog No</b>	YP-Ab-11458
<b>Isotype</b>	IgG
<b>Reactivity</b>	Human; Mouse
<b>Applications</b>	WB
<b>Gene Name</b>	TESC CHP3
<b>Protein Name</b>	CHP3
<b>Immunogen</b>	Synthesized peptide derived from human CHP3 AA range: 20-70
<b>Specificity</b>	This antibody detects endogenous levels of CHP3 at Human/Mouse
<b>Formulation</b>	Liquid in PBS containing 50% glycerol, 0.5% BSA and 0.02% sodium azide.
<b>Source</b>	Polyclonal, Rabbit,IgG
<b>Purification</b>	The antibody was affinity-purified from rabbit serum by affinity-chromatography using specific immunogen.
<b>Dilution</b>	WB 1: 500-2000
<b>Concentration</b>	1 mg/ml
<b>Purity</b>	≥90%
<b>Storage Stability</b>	-20°C/1 year
<b>Synonyms</b>	
<b>Observed Band</b>	
<b>Cell Pathway</b>	Nucleus . Cytoplasm . Membrane ; Lipid-anchor . Cell membrane . Cell projection, lamellipodium . Cell projection, ruffle membrane . Colocalizes with SLC9A1 at the plasma membrane. .
<b>Tissue Specificity</b>	Expressed in mature megakaryocytes and polymorphonuclear granulocytes (at protein level). Abundantly expressed in heart. Also expressed at a lower level in adult testis and salivary gland, and in the placenta.
<b>Function</b>	caution:It is uncertain whether Met-1 or Met-54 is the initiator.,cofactor:Binds calcium.,developmental stage:Strongly up-regulated in K562 cells treated by PMA to promote megakaryocytic differentiation, but not when treated by DMSO to promote granulocytic differentiation or by hemin to promote erythroid differentiation (at protein level).,function:Essential for the coupling of ERK cascade activation with the expression of ETS family genes in megakaryocytic differentiation.,similarity:Contains 1 EF-hand domain.,subunit:Interacts with Sodium/hydrogen exchanger 1 (SLC9A1).,tissue specificity:Abundantly expressed in heart.,
<b>Background</b>	



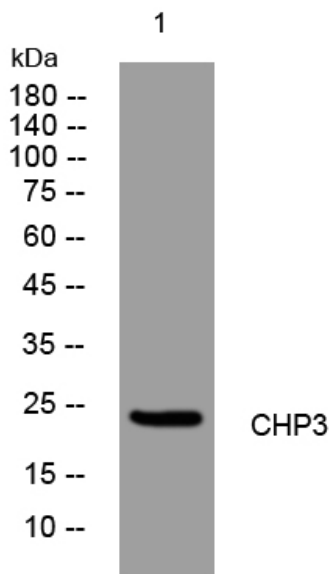
**matters needing attention**

Avoid repeated freezing and thawing!

**Usage suggestions**

This product can be used in immunological reaction related experiments. For more information, please consult technical personnel.

**Products Images**



Western blot analysis of lysates from HpeG2 cells, primary antibody was diluted at 1:1000, 4° over night