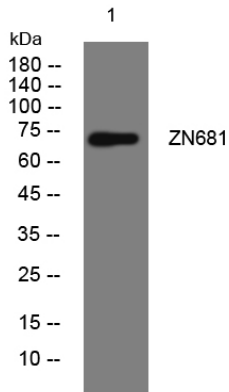


ZN681 rabbit pAb

Catalog No	YP-Ab-11467
Isotype	IgG
Reactivity	Human;Rat;Mouse;
Applications	WB
Gene Name	ZNF681
Protein Name	ZN681
Immunogen	Synthesized peptide derived from human ZN681 AA range: 178-228
Specificity	This antibody detects endogenous levels of ZN681 at Human
Formulation	Liquid in PBS containing 50% glycerol, 0.5% BSA and 0.02% sodium azide.
Source	Polyclonal, Rabbit,IgG
Purification	The antibody was affinity-purified from rabbit serum by affinity-chromatography using specific immunogen.
Dilution	WB 1: 500-2000
Concentration	1 mg/ml
Purity	≥90%
Storage Stability	-20°C/1 year
Synonyms	
Observed Band	
Cell Pathway	Nucleus .
Tissue Specificity	
Function	function:May be involved in transcriptional regulation.,sequence caution:Contaminating sequence. Potential poly-A sequence.,similarity:Belongs to the krueppel C2H2-type zinc-finger protein family.,similarity:Contains 16 C2H2-type zinc fingers.,
Background	
matters needing attention	Avoid repeated freezing and thawing!
Usage suggestions	This product can be used in immunological reaction related experiments. For more information, please consult technical personnel.



Products Images



Western blot analysis of lysates from THP-1 cells,
primary antibody was diluted at 1:1000, 4° over night