



PUS10 rabbit pAb

Catalog No	YP-Ab-11468
Isotype	IgG
Reactivity	Human; Mouse
Applications	WB; ELISA;IHC
Gene Name	PUS10 CCDC139 DOBI
Protein Name	PUS10
Immunogen	Synthesized peptide derived from human PUS10 AA range: 425-475
Specificity	This antibody detects endogenous levels of PUS10 at Human/Mouse
Formulation	Liquid in PBS containing 50% glycerol, 0.5% BSA and 0.02% sodium azide.
Source	Polyclonal, Rabbit,IgG
Purification	The antibody was affinity-purified from rabbit serum by affinity-chromatography using specific immunogen.
Dilution	WB 1:500-2000;IHC-p 1:50-300; ELISA 2000-20000
Concentration	1 mg/ml
Purity	≥90%
Storage Stability	-20°C/1 year
Synonyms	
Observed Band	
Cell Pathway	Nucleus . Cytoplasm . Mitochondrion . Localizes mainly in the nucleus (Probable) (PubMed:31819270). tRNA pseudouridylate synthase activity is restricted to the cytoplasm (PubMed:31819270). Translocates from nucleus to mitochondria during TRAIL-induced apoptosis (PubMed:28981101). .
Tissue Specificity	
Function	catalytic activity:tRNA uridine = tRNA pseudouridine.,function:Responsible for synthesis of pseudouridine from uracil-55 in the psi GC loop of transfer RNAs.,PTM:Phosphorylated upon DNA damage, probably by ATM or ATR.,sequence caution:Partially unspliced pre-RNA.,similarity:Belongs to the pseudouridine synthase Pus10 family.,
Background	Pseudouridination, the isomerization of uridine to pseudouridine, is the most common posttranscriptional nucleotide modification found in RNA and is essential for biologic functions such as spliceosome biogenesis. Pseudouridylate synthases, such as PUS10, catalyze pseudouridination of structural RNAs, including transfer, ribosomal, and splicing RNAs. These enzymes also act as RNA chaperones, facilitating the correct folding and assembly of tRNAs (McCleverty et al., 2007 [PubMed 17900615]).[supplied by OMIM, May 2009],



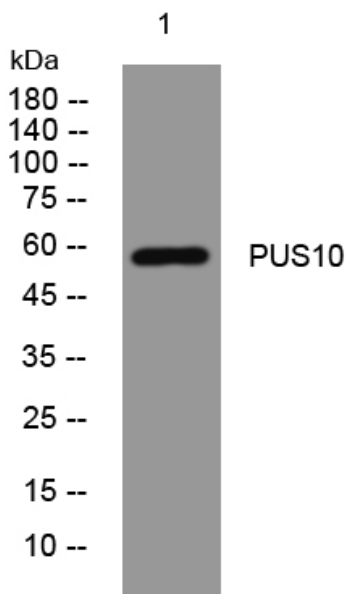
matters needing attention

Avoid repeated freezing and thawing!

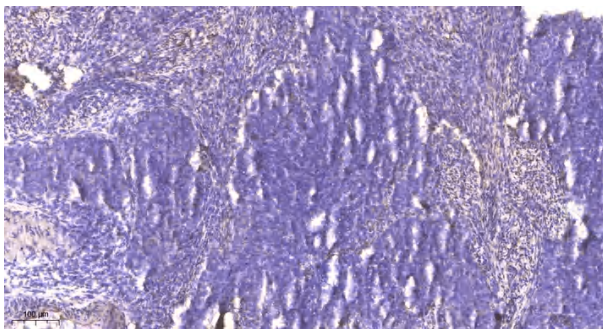
Usage suggestions

This product can be used in immunological reaction related experiments. For more information, please consult technical personnel.

Products Images



Western blot analysis of lysates from THP-1 cells, primary antibody was diluted at 1:1000, 4° over night



Immunohistochemical analysis of paraffin-embedded human cervical carcinoma. 1, Antibody was diluted at 1:200(4° overnight). 2, Tris-EDTA,pH9.0 was used for antigen retrieval. 3,Secondary antibody was diluted at 1:200(room temperature, 45min).