

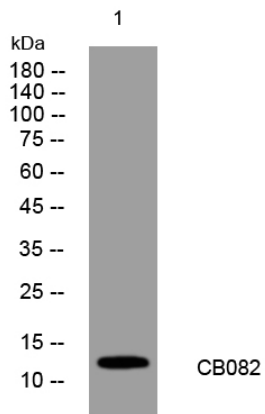


## CB082 rabbit pAb

<b>Catalog No</b>	YP-Ab-11478
<b>Isotype</b>	IgG
<b>Reactivity</b>	Human; Mouse
<b>Applications</b>	WB
<b>Gene Name</b>	C2orf82 UNQ830/PRO1757
<b>Protein Name</b>	CB082
<b>Immunogen</b>	Synthesized peptide derived from human CB082 AA range: 68-118
<b>Specificity</b>	This antibody detects endogenous levels of CB082 at Human/Mouse
<b>Formulation</b>	Liquid in PBS containing 50% glycerol, 0.5% BSA and 0.02% sodium azide.
<b>Source</b>	Polyclonal, Rabbit,IgG
<b>Purification</b>	The antibody was affinity-purified from rabbit serum by affinity-chromatography using specific immunogen.
<b>Dilution</b>	WB 1: 500-2000
<b>Concentration</b>	1 mg/ml
<b>Purity</b>	≥90%
<b>Storage Stability</b>	-20°C/1 year
<b>Synonyms</b>	
<b>Observed Band</b>	
<b>Cell Pathway</b>	Membrane ; Single-pass membrane protein . Cytoplasm . Secreted, extracellular space, extracellular matrix . Appears as reticular-like structures throughout the cytoplasm and adjacent to the plasma membrane. In proliferation and hypertrophic chondrocytes, detected intracellularly and in the pericellular extracellular matrix. In primary spongiosa, detected only in the extracellular matrix. .
<b>Tissue Specificity</b>	Expressed in cartilage.
<b>Function</b>	
<b>Background</b>	
<b>matters needing attention</b>	Avoid repeated freezing and thawing!
<b>Usage suggestions</b>	This product can be used in immunological reaction related experiments. For more information, please consult technical personnel.



## Products Images



Western blot analysis of lysates from 293T cells,  
primary antibody was diluted at 1:1000, 4° over night