



BEX2 rabbit pAb

Catalog No	YP-Ab-11482
Isotype	IgG
Reactivity	Human; Mouse;Rat
Applications	WB
Gene Name	BEX2
Protein Name	BEX2
Immunogen	Synthesized peptide derived from human BEX2 AA range: 28-78
Specificity	This antibody detects endogenous levels of BEX2 at Human/Mouse/Rat
Formulation	Liquid in PBS containing 50% glycerol, 0.5% BSA and 0.02% sodium azide.
Source	Polyclonal, Rabbit,IgG
Purification	The antibody was affinity-purified from rabbit serum by affinity-chromatography using specific immunogen.
Dilution	WB 1: 500-2000
Concentration	1 mg/ml
Purity	≥90%
Storage Stability	-20°C/1 year
Synonyms	
Observed Band	
Cell Pathway	Cytoplasm . Nucleus .
Tissue Specificity	Expressed in central nervous system, with high level in pituitary, cerebellum and temporal lobe. Widely expressed in breast cancer cell lines.
Function	caution:Was named BEX1 by some authors.,similarity:Belongs to the BEX family.,subunit:Interacts with OMP (By similarity). Interacts with LMO2, possibly leading to regulate the transcriptional activity of a DNA-binding complex containing LMO2.,tissue specificity:Expressed in central nervous system, with high level in pituitary, cerebellum and temporal lobe.,
Background	This gene belongs to the brain expressed X-linked gene family. The encoded protein interacts with the transcription factor LIM domain only 2 in a DNA-binding complex that recognizes the E-box element and promotes transcription. This gene has been found to be a tumor suppressor that is silenced in human glioma. In breast cancer cells, this gene product modulates apoptosis in response to estrogen and tamoxifen, and enhances the anti-proliferative effect of tamoxifen. Multiple transcript variants encoding different isoforms have been found for this gene. [provided by RefSeq, Dec 2009],



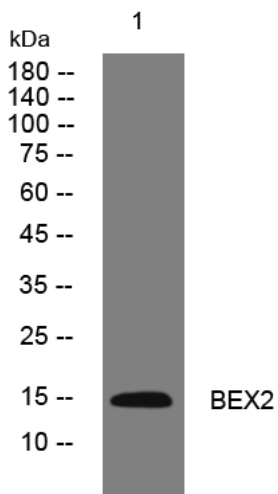
matters needing attention

Avoid repeated freezing and thawing!

Usage suggestions

This product can be used in immunological reaction related experiments. For more information, please consult technical personnel.

Products Images



Western blot analysis of lysates from HpeG2 cells, primary antibody was diluted at 1:1000, 4° over night