



## ZEP2 rabbit pAb

<b>Catalog No</b>	YP-Ab-11497
<b>Isotype</b>	IgG
<b>Reactivity</b>	Human; Mouse;Rat
<b>Applications</b>	WB
<b>Gene Name</b>	HIVEP2
<b>Protein Name</b>	ZEP2
<b>Immunogen</b>	Synthesized peptide derived from human ZEP2 AA range: 1975-2025
<b>Specificity</b>	This antibody detects endogenous levels of ZEP2 at Human/Mouse/Rat
<b>Formulation</b>	Liquid in PBS containing 50% glycerol, 0.5% BSA and 0.02% sodium azide.
<b>Source</b>	Polyclonal, Rabbit,IgG
<b>Purification</b>	The antibody was affinity-purified from rabbit serum by affinity-chromatography using specific immunogen.
<b>Dilution</b>	WB 1: 500-2000
<b>Concentration</b>	1 mg/ml
<b>Purity</b>	≥90%
<b>Storage Stability</b>	-20°C/1 year
<b>Synonyms</b>	
<b>Observed Band</b>	
<b>Cell Pathway</b>	Nucleus.
<b>Tissue Specificity</b>	Expressed in brain and skeletal muscle.
<b>Function</b>	function:This protein specifically binds to the DNA sequence 5'-GGGACTTTCC-3' which is found in the enhancer elements of numerous viral promoters such as those of SV40, CMV, or HIV1. In addition, related sequences are found in the enhancer elements of a number of cellular promoters, including those of the class I MHC, interleukin-2 receptor, somatostatin receptor II, and interferon-beta genes. It may act in T-cell activation.,induction:By mitogens and phorbol ester.,similarity:Contains 4 C2H2-type zinc fingers.,subunit:Interacts with TCF4.,tissue specificity:Expressed in brain and skeletal muscle.,
<b>Background</b>	This gene encodes a member of a family of closely related, large, zinc finger-containing transcription factors. The encoded protein regulates transcription by binding to regulatory regions of various cellular and viral genes that maybe involved in growth, development and metastasis. The protein contains the ZAS domain comprised of two widely separated regions of zinc finger motifs, a stretch of highly acidic amino acids and a serine/threonine-rich sequence. [provided by RefSeq, Nov 2012],



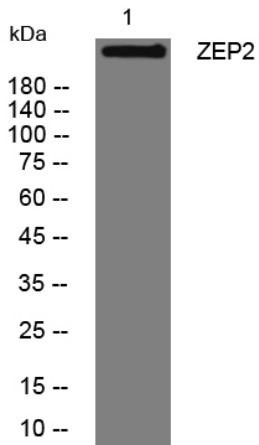
**matters needing attention**

Avoid repeated freezing and thawing!

**Usage suggestions**

This product can be used in immunological reaction related experiments. For more information, please consult technical personnel.

**Products Images**



Western blot analysis of lysates from VEC cells, primary antibody was diluted at 1:1000, 4° over night